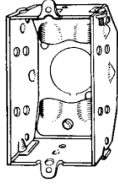


Steel switch boxes

2 1/4" DEEP – GANGABLE – BEVELED CORNERS – 10.5 CUBIC INCH CAPACITY

2" WIDE x 3" LONG

UL LISTED



TP134



TP137 Hold-tite



TP138

Cat. #	Description	Ears	Bumps	Knockouts			Unit qty.	Wt. lbs. per 100
				Each end	Each side	Bottom		
Clamp screws through beveled corners								
TP134	Gangable	-	Yes	2 - cable	-	1 - 1/2"	50	51
TP137	Gangable	Yes	-	2 - cable	-	1 - 1/2"	50	57
TP137G ^F	Gangable	Yes	-	2 - Cable	-	1 - 1/2"	50	57
TP138	Gangable	Yes	-	2 - cable	-	1 - 1/2"	50	55
TP138G ^F	Gangable	Yes	-	2 - Cable	-	1 - 1/2"	50	55

^FCSA certified. G indicates ground screw installed.

2 1/2" DEEP – GANGABLE – 12.5 CUBIC INCH CAPACITY

2" WIDE x 3" LONG

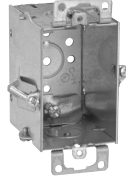
UL LISTED



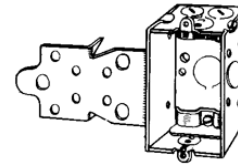
TP158



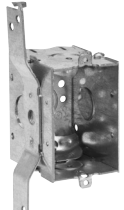
TP162



TP163



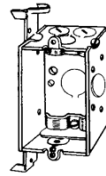
TP164, TP168



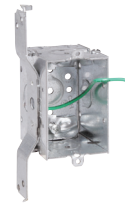
TP170



TP161



TP172



TP174



TP171

Cat. #	Bracket	Ears	Ground pigtail	Leveling bumps	Knockouts			Unit qty.	Wt. lbs. per 100
					Each end	Each side	Bottom		
For non-metallic cable – clamps in each end									
TP158	-	-	-	Yes	2 - cable, 1 - 1/2"	-	1 - 1/2"	50	59
TP115 ^G	-	Yes	Yes	-	2 - cable	1 - 1/2"	1 - 1/2"	50	63
TP161	Snap-in	Yes	-	-	2 - cable	1 - 1/2"	-	50	73
TP161G ^F	Snap-in	Yes	-	-	2 - cable	1 - 1/2"	-	50	73
TP162	-	Yes	-	-	2 - cable	1 - 1/2"	1 - 1/2"	50	62
TP162G ^F	-	Yes	-	-	2 - cable	1 - 1/2"	1 - 1/2"	50	62
TP163	Hold-tite	Yes	-	-	2 - cable	-	1 - 1/2"	50	65
TP163G ^F	Hold-tite	Yes	-	-	2 - cable	-	1 - 1/2"	50	65
TP164	"F", set 1/2"	-	-	-	2 - cable, 1 - 1/2"	1 - 1/2"	1 - 1/2"	50	71
TP164G ^F	"F", set 1/2"	-	-	-	2 - cable, 1 - 1/2"	1 - 1/2"	1 - 1/2"	50	71
TP168	"F", set 1/4"	-	-	-	2 - cable, 1 - 1/2"	1 - 1/2"	1 - 1/2"	50	71
TP168G ^F	"F", set 1/4"	-	-	-	2 - cable, 1 - 1/2"	1 - 1/2"	1 - 1/2"	50	71
TP170	"S", set 3/8"	-	-	-	2 - cable, 1 - 1/2"	1 - 1/2"	1 - 1/2"	50	69
TP172	"D", set 5/8"	-	-	-	2 - cable, 1 - 1/2"	1 - 1/2"	1 - 1/2"	50	70
TP174	"D", set 3/8"	-	Yes	-	2 - cable, 1 - 1/2"	1 - 1/2"	1 - 1/2"	50	71
TP171	"VP", set 1/2"	-	-	-	2 - cable, 1 - 1/2"	1 - 1/2"	1 - 1/2"	50	73
TP171G ^F	"VP", set 1/2"	-	-	-	2 - cable, 1 - 1/2"	1 - 1/2"	1 - 1/2"	50	73

^GNot UL Listed.

^FCSA certified. G indicates ground screw installed.