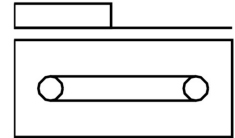
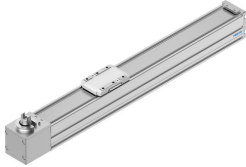


Belt driven linear actuator ELGC-TB-KF-45-300

Part number: 8062769

FESTO



Data sheet

Feature	Value
Drive pinion effective diameter	19.1 mm
Working stroke	300 mm
Size	45
Stroke reserve	0 mm
Toothed belt elongation	0.187 %
Toothed belt pitch	2 mm
Type code	ELGC
Mounting position	Any
Guide	Recirculating ball bearing guide
Design	Electromechanical linear axis with toothed belt
Motor type	Stepper motor Servo motor
Symbol	00991212
Measuring principle of linear potentiometer	Incremental
Max. acceleration	15 m/s ²
Max. speed	1.2 m/s
Repetition accuracy	±0.1 mm
Duty cycle	100%
Degree of protection	IP40
Ambient temperature	0 °C ... 50 °C
2nd moment of area ly	140000 mm ⁴
2nd moment of area lz	170000 mm ⁴
Max. driving torque	0.716 Nm
Max. force Fy	300 N
Max. force Fz	600 N
Max. no-load resistance to shifting	7.8 N
Max. torque Mx	5.5 Nm
Max. torque My	4.7 Nm
Max. torque Mz	4.7 Nm
Max. feed force Fx	75 N
No-load driving torque	0.075 Nm
Torsion moment of inertia It	8500 mm ⁴
Mass moment of inertia JH per meter of stroke	0.0281 kgcm ²
Mass moment of inertia JL per kg of payload	0.9119 kgcm ²
Mass moment of inertia JO	0.1862 kgcm ²

Feature	Value
Feed constant	60 mm/U
Moving mass	169 g
Moving mass at 0 mm stroke	169 g
Slide weight	55 g
Additional weight per 10 mm stroke	23 g
Basic weight with 0 mm stroke	760 g
Product weight	1448 g
Interface code, actuator	V32
Material of end caps	Die cast aluminum, painted
Profile material	Wrought aluminum alloy, anodized
Note on materials	Contains paint-wetting impairment substances RoHS-compliant
Cover strip material	Stainless steel strip
Drive cover material	Die cast aluminum, painted
Slide carriage material	Tempered steel
Guide rail material	Tempered steel
Belt pulley material	High-alloy stainless steel
Slide material	Die-cast aluminum
Toothed belt material	Polychloroprene with glass fiber