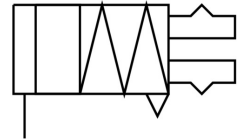
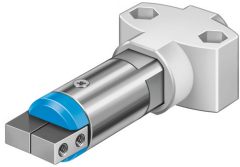


# Angled gripper HGWM-12-EZ-G6

Part number: 185702

FESTO



## Data sheet

Feature	Value
Size	12
Max. gripper jaw angular play ax, ay	0.5 deg
Max. gripper jaw backlash Sz	0.03 mm
Max. opening angle	14 deg
Pneumatic gripper repetition accuracy	≤0.02 mm
Type code	HGWM
Number of gripper jaws	2
Mode of operation	Single-acting Closed
Gripper function	Angle
Design	Inclined plane
Position sensing	None
Symbol	00991898
Operating pressure	2 bar ... 8 bar
Max. operating frequency of pneumatic gripper	4 Hz
Min. opening time at 6 bar	1.7 ms
Min. closing time at 6 bar	2.8 ms
Operating medium	Compressed air as per ISO 8573-1:2010 [7:-:-]
Corrosion resistance class (CRC)	2 - Moderate corrosion stress
Ambient temperature	5 °C ... 60 °C
Stroke compensation spring force	10 N ... 23 N
Spring return torque	0.015 Nm
Total gripping torque at 6 bar, opening	76 Ncm
Maximum force on gripper jaw Fz, static	20 N
Maximum torque on gripper jaw, Mx static	0.4 Nm
Maximum torque on gripper jaw, My static	0.4 Nm
Maximum torque on gripper jaw, Mz static	0.4 Nm
Product weight	75 g
Type of mounting	With internal thread
Pneumatic connection	M3
Note on materials	Free of copper and PTFE
Cover cap material	POM
Housing material	High-alloy stainless steel
Gripper jaw material	High-alloy steel