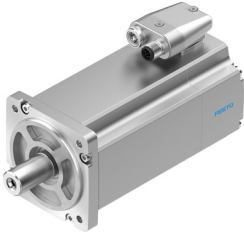


Servo motor EMME-AS-80-SK-LS-AMX

Part number: 4267582

FESTO



Data sheet

Feature	Value
Number of pole pairs	3
Type code	EMME-AS
Rotor position sensor	Safety encoder, absolute multi-turn
Rotor position sensor interface	HIPERFACE®
Rotor position sensor measuring principle	Optical
Safety Integrity Level (SIL), subcomponent	SIL 2, rotor position sensor SILCL 2, rotor position sensor
Performance Level (PL), subcomponent	Category 3, performance level d, rotor position encoder
PFHd, subcomponent	1.3 x 10E-8, rotor position sensor
Duration of use Tm, subcomponent	20 years, rotor position sensor
Max. rotational speed	4690 1/min
Nominal rotary speed	3000 1/min
Continuous stall current	3.1 A
Insulation protection class	F
Motor constants	0.923 Nm/A
Nominal operating voltage DC	360 V
Motor nominal power	750 W
DC nominal voltage	360 V
Motor nominal current	2.6 A
Typical rotor position sensor resolution	15 bit
Rotor position encoder, typical angular accuracy	20 arcmin
Rotor position encoder, sinusoidal/cosinusoidal periods per revolution	128
Phase-phase winding resistance	4.6 Ohm
Winding inductance phase-phase	9.46 mH
Type of winding switch	Star inside
Peak current	12.4 A
Voltage constant, phase-to-phase	54.3 mVmin
Rating class according to EN 60034-1	S1
CE marking (see declaration of conformity)	As per EU EMC directive As per EU low voltage directive
Corrosion resistance class (CRC)	0 - No corrosion stress
Storage temperature	-20 °C ... 70 °C
Relative air humidity	0 - 90 %
Degree of protection	IP21
Ambient temperature	-10 °C ... 40 °C

Feature	Value
Certification	RCM compliance mark c UL us - Recognized (OL)
Total output inertia moment	1.4 kgcm ²
Nominal torque	2.4 Nm
Peak torque	11.2 Nm
Stall torque	2.8 Nm
Permissible axial shaft load	70 N
Permissible radial shaft load	350 N
MTTFd, subcomponent	874 years, rotor position sensor
Product weight	3050 g
Electrical connection technology	Plug
Note on materials	Contains paint-wetting impairment substances RoHS-compliant
Conforms to standard	IEC 60034
Featherkey shaft design	DIN 6885 A 6 x 6 x 22