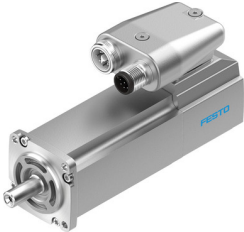


Servo motor EMME-AS-40-M-LV-AS

Part number: 2082444

FESTO



Data sheet

Feature	Value
Number of pole pairs	2
Type code	EMME-AS
Rotor position sensor	Absolute encoder, single-turn
Rotor position sensor interface	HIPERFACE®
Rotor position sensor measuring principle	Capacitive
Max. rotational speed	10000 1/min
Nominal rotary speed	9000 1/min
Continuous stall current	1.6 A
Insulation protection class	F
Motor constants	0.175 Nm/A
Nominal operating voltage DC	360 V
Motor nominal power	200 W
DC nominal voltage	360 V
Motor nominal current	1.2 A
Typical rotor position sensor resolution	12 bit
Rotor position encoder, typical angular accuracy	20 arcmin
Rotor position encoder, sinusoidal/cosinusoidal periods per revolution	16
Phase-phase winding resistance	8.6 Ohm
Winding inductance phase-phase	4.51 mH
Type of winding switch	Star inside
Peak current	6.4 A
Voltage constant, phase-to-phase	13.2 mVmin
Rating class according to EN 60034-1	S1
CE marking (see declaration of conformity)	As per EU EMC directive As per EU low voltage directive
Corrosion resistance class (CRC)	0 - No corrosion stress
Storage temperature	-20 °C ... 70 °C
Relative air humidity	0 - 90 %
Degree of protection	IP21
Ambient temperature	-10 °C ... 40 °C
Certification	RCM compliance mark c UL us - Recognized (OL)
Total output inertia moment	0.054 kgcm ²
Nominal torque	0.21 Nm
Peak torque	1.4 Nm
Stall torque	0.35 Nm

Feature	Value
Permissible axial shaft load	12 N
Permissible radial shaft load	115 N
MTTFd, subcomponent	340 years, rotor position sensor
Product weight	700 g
Electrical connection technology	Plug
Note on materials	Contains paint-wetting impairment substances RoHS-compliant
Conforms to standard	IEC 60034