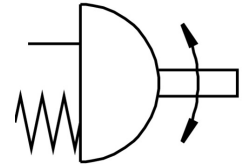
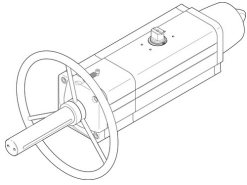


Quarter turn actuator DAPS-0360-090-RS4-F1012-MW

Part number: 8005049

FESTO



Data sheet

Feature	Value
Size of valve actuator	0360
Flange hole pattern	F10 F12
Swivel angle	92 deg
Depth shaft connection	29.5 mm
Type code	DAPS
Information on the end-position adjusting range	One end position optionally adjustable
Standard connection for valve	ISO 5211
Cushioning	No cushioning
Mounting position	Any
Mode of operation	Single-acting
Design	Scotch yoke system
Position sensing	None
Closing direction	Clockwise closing
Symbol	00991266
Valve connection conforms to standard	VDI/VDE 3845 (NAMUR)
Safety integrity level (SIL)	Up to SIL 2 high demand mode Up to SIL 2 low demand mode
Connection pressure for spring force	5.6 bar
Operating pressure	5.6 bar ... 8.4 bar
Nominal operating pressure	5.6 bar
ATEX category gas	II 2G
Type of ignition protection for gas	Ex h IIC T6...T3 Gb X
ATEX category for dust	II 2D
Type of (ignition) protection for dust	Ex h IIIC T85°C...T200°C Db X
Explosive ambient temperature	-50°C ≤ Ta ≤ +60°C
Ambient temperature	-20 °C ... 80 °C
Explosion prevention and protection	Zone 1 (ATEX) Zone 2 (ATEX) Zone 21 (ATEX) Zone 22 (ATEX)
Operating medium	Compressed air as per ISO 8573-1:2010 [7:4:4]
Information on operating and pilot media	Operation with oil lubrication possible (required for further use)
CE marking (see declaration of conformity)	as per EU explosion protection directive (ATEX)
Corrosion resistance class (CRC)	2 - Moderate corrosion stress
Torque at nominal operating pressure and 0° swivel angle	360 Nm
Torque at nominal operating pressure and 50° swivel angle	180 Nm

Feature	Value
Torque at nominal operating pressure and 90° swivel angle	240 Nm
Spring return torque at 0° swivel angle	240 Nm
Spring return torque with 50° swivel angle	180 Nm
Spring return torque with 90° swivel angle	360 Nm
Spring force	4
Air consumption at 6 bar per cycle 0°-nominal swivel angle-0°	14 l
Product weight	19500 g
Shaft connection	T27
Pneumatic connection	G1/4
Note on materials	RoHS-compliant
Cover material	Wrought aluminum alloy
Seals material	FPM NBR PUR
Housing material	Wrought aluminum alloy
Material of screws	High-alloy steel
Shaft material	High-alloy steel
Material number for shaft	1.4305