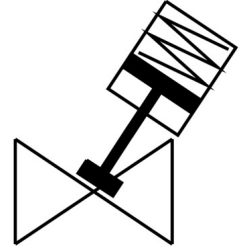


Angle seat valve VZXA-B-TS6-40-M2-V13T-9.3-K-75-20-V4

FESTO

Part number: 8060536



Data sheet

| Feature | Value |
|-------------------------------|--|
| Type code | VZXA |
| Certificate issuing authority | CRN0C20829.5C German Technical Control Board (TÜV) 968/V 1039.00/18 |
| Safety integrity level (SIL) | SIL 2 |
| PFH | 1.36E-7 |
| PFD | 5.95E-4 |
| Certification | CRN |
| Operating pressure | 0.5 MPa ... 1 MPa |
| Medium pressure | 0 MPa ... 0.93 MPa |
| Operating pressure | 72.5 psi ... 145 psi |
| Use in exterior area | wettergeschützte Einsatzorte Klasse C1 in Anlehnung an IEC 60654-1 |
| Design | Poppet valve with piston actuator |
| Actuation type | Pneumatic |
| Mounting position | Any |
| Type of mounting | Line installation |
| Cable connection | Threaded sleeve G1 1/2 as per DIN ISO 228 |
| Valve function | 2/2 |
| Flow direction | Non-reversible |
| Medium pressure | 0 bar ... 9.3 bar |
| Reset method | Mechanical spring |
| Type of control | Externally controlled |
| Pneumatic connection | Internal thread G1/8 |
| Operating pressure | 5 bar ... 10 bar |
| Symbol | 00995586 |
| Medium | Vapor Hydraulic fluid based on mineral oil Inert gas Mineral oil Water Filtered compressed air, 200 µm filter mesh Neutral liquids |
| Flow direction | Under valve seat, for gaseous and liquid media |
| Control of the medium | On/off mode |
| Operating medium | Compressed air as per ISO 8573-1:2010 [7:4:4] |
| Max. viscosity | 600 mm ² /s |

| Feature | Value |
|--|--|
| Temperature of medium | -10 °C ... 180 °C |
| Ambient temperature | 0 °C ... 60 °C |
| Flow rate Kv | 41.4 m³/h |
| Note on materials | Contains paint-wetting impairment substances RoHS-compliant |
| Valve housing material | Cast stainless steel |
| Material number, fitting housing | 1.4409 |
| Seals material | FPM |
| Spindle seal material | PTFE |
| Seat seal material | PTFE |
| Product weight | 4610 g |
| CE marking (see declaration of conformity) | as per EU machinery directive |
| Actuator size | 75 mm |
| Stroke | 20 mm |
| Control function | Closed by spring force, NC |
| Position sensing | With mechanical indicator |
| Drive housing material | Cast stainless steel |
| Material number, drive housing | 1.4408 |
| Explosion prevention and protection | Zone 1 (ATEX) Zone 2 (ATEX) Zone 21 (ATEX) Zone 22 (ATEX) |
| Storage temperature | -10 °C ... 60 °C |
| Degree of protection | IP65 IP67 |
| Piston rod material | High-alloy stainless steel |
| Cover material | Cast stainless steel |