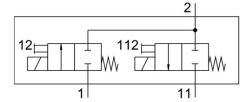
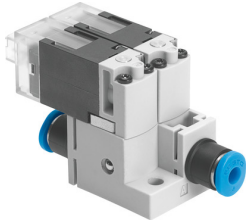


Vacuum valve MHA1-2X2/2G-1,5-4-4-3

Part number: 560372

FESTO



Data sheet

Feature	Value
Valve function	2x2/2 closed, monostable
Max. cable length	30 m
Actuation type	Electrical
Width	20 mm
Standard nominal flow rate	30 l/min
Pneumatic working port	QS-3
Operating voltage	24V DC
Operating pressure	0 bar ... 1.5 bar
Reset method	Mechanical spring
Degree of protection	IP40
Nominal width	1.5 mm
Width dimension	20 mm
Type code	MHA1
Exhaust air function	Without flow control option
Sealing principle	Soft
Mounting position	Any
Manual override	Non-detenting
Type of control	Direct
Flow direction	Non-reversible
Symbol	00992254
Signal status display	LED
Operating pressure, reversible	-0.95 bar ... 0 bar
Suitability for vacuum	yes
Standard flow rate	30 l/min
Max. switching frequency	10 Hz
Switching time off	6 ms
On switching time	6 ms
Duty cycle	100%
Coil characteristics	24 V DC: low-current phase 0.7 W, high-current phase 3.0 W
Permissible voltage fluctuations	+/- 10 %
Operating medium	Compressed air as per ISO 8573-1:2010 [7:4:4]
Information on operating and pilot media	Operation with oil lubrication possible (required for further use)
CE marking (see declaration of conformity)	As per EU EMC directive
Vibration resistance	Transport application test with severity level 2 as per FN 942017-4 and EN 60068-2-6
Shock resistance	Shock test with severity level 2 as per FN 942017-5 and EN 60068-2-27

Feature	Value
Corrosion resistance class (CRC)	2 - Moderate corrosion stress
Storage temperature	-20 °C ... 60 °C
Temperature of medium	-5 °C ... 50 °C
Ambient temperature	-5 °C ... 50 °C
Product weight	30.6 g
Electrical connection	KMH plug
Type of mounting	With through-hole
Pneumatic connection 1	QS-4
Pneumatic connection 11	QS-4
Pneumatic connection 2	QS-3
Note on materials	Free of copper and PTFE RoHS-compliant
Seals material	FPM HNBR NBR
Housing material	PA-reinforced PPS-reinforced
Material of screws	Steel