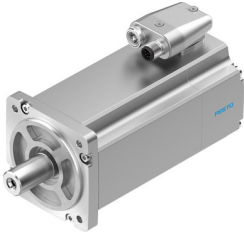


# Servo motor EMME-AS-80-S-HS-AS

Part number: 2093136

FESTO



## Data sheet

Feature	Value
Number of pole pairs	3
Type code	EMME-AS
Rotor position sensor	Absolute encoder, single-turn
Rotor position sensor interface	HIPERFACE®
Rotor position sensor measuring principle	Capacitive
Max. rotational speed	4192 1/min
Nominal rotary speed	3000 1/min
Continuous stall current	1.8 A
Insulation protection class	F
Motor constants	1.438 Nm/A
Nominal operating voltage DC	565 V
Motor nominal power	720 W
DC nominal voltage	565 V
Motor nominal current	1.6 A
Typical rotor position sensor resolution	12 bit
Rotor position encoder, typical angular accuracy	20 arcmin
Rotor position encoder, sinusoidal/cosinusoidal periods per revolution	16
Phase-phase winding resistance	14.2 Ohm
Winding inductance phase-phase	30 mH
Type of winding switch	Star inside
Peak current	7.2 A
Voltage constant, phase-to-phase	95.3 mVmin
Rating class according to EN 60034-1	S1
CE marking (see declaration of conformity)	As per EU EMC directive As per EU low voltage directive
Corrosion resistance class (CRC)	0 - No corrosion stress
Storage temperature	-20 °C ... 70 °C
Relative air humidity	0 - 90 %
Degree of protection	IP21
Ambient temperature	-10 °C ... 40 °C
Certification	RCM compliance mark c UL us - Recognized (OL)
Total output inertia moment	1.4 kgcm <sup>2</sup>
Nominal torque	2.3 Nm
Peak torque	11.2 Nm
Stall torque	2.8 Nm

<b>Feature</b>	<b>Value</b>
Permissible axial shaft load	70 N
Permissible radial shaft load	350 N
MTTFd, subcomponent	340 years, rotor position sensor
Product weight	3050 g
Electrical connection technology	Plug
Note on materials	Contains paint-wetting impairment substances RoHS-compliant
Conforms to standard	IEC 60034