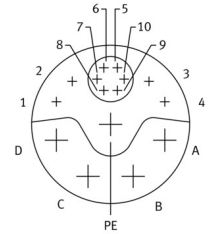
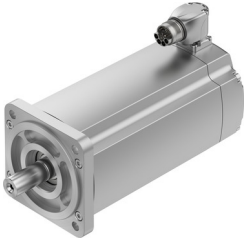


Servo motor EMMT-AS-100-M-HS-RS

Part number: 5255530

FESTO



Data sheet

Feature	Value
Electrical connection 1, connection technology	M23x1
Electrical connection 1, connection type	Hybrid plug
Detent torque	< 1.0% of peak torque
Electrical connection for input 1, connection pattern	00995913
Concentricity, coaxiality, axial runout according to DIN SPEC 42955	N
Rotor position sensor for manufacturer designation	ECI 1319
Mounting position	Any
Shock resistance	Shock test with severity level 2 as per FN 942017-5 and EN 60068-2-27
Information on max. installation height	with 1,000 m and longer only with derating of -1.0% per 100 m
Note on degree of protection	IP40 for motor shaft without rotary shaft seal IP65 for motor shaft with rotary shaft seal IP67 for motor housing, incl. connection technology
Contamination level	2
Note on ambient temperature	Up to 80 °C with derating of -1.5% per degree Celsius
Vibration resistance	Transport application test with severity level 2 as per FN 942017-4 and EN 60068-2-6
Measuring flange	300 x 300 x 20 mm, steel
Motor type as per EN 60034-7	IM B5 IM V1 IM V3
Balancing quality	G 2.5
Certificate issuing authority	UL E342973
Electrical connection 1, number of pins/wires	15
Max. winding temperature	155 °C
Max. installation height	4000 m
Rotor position encoder for DC operating voltage	5 V
Max. mechanical speed	13000 1/min
Number of pole pairs	5
Storage lifetime, under nominal conditions	20000 h
Electric time constant	16.6 ms
Cross inductivity Lq (phase)	15.3 mH
Winding longitudinal inductivity Ld (phase)	10.2 mH
Rotor position encoder for DC operating voltage range	3.6 V ... 14 V
Standstill torque constant	1.66 Nm/A
Rotor position encoder for absolutely detectable revolutions	1

Feature	Value
Rotor position encoder system accuracy angle measurement	-65 arcsec ... 65 arcsec
Thermal resistance	0.5 K/W
Rotor position encoder for positional values per revolution	524288
Thermal time constant	73 min
Type code	EMMT-AS
Rotor position sensor	Absolute encoder, single-turn
Rotor position sensor interface	EnDat® 22
Rotor position sensor measuring principle	Inductive
Temperature monitoring	Digital motor temperature transmission via EnDat® 2.2
Max. rotational speed	3980 1/min
Nominal rotary speed	2700 1/min
Continuous stall current	5.9 A
Motor constants	1.46 Nm/A
Nominal operating voltage DC	565 V
Motor nominal power	1770 W
Motor nominal current	4.3 A
Rotor position sensor resolution	19 bit
Phase-phase winding resistance	1.84 Ohm
Winding inductance phase-phase	20.4 mH
Type of winding switch	Star inside
Peak current	22.1 A
Voltage constant, phase-to-phase	100 mVmin
Rating class according to EN 60034-1	S1
CE marking (see declaration of conformity)	As per EU EMC directive As per EU low voltage directive As per EU RoHS directive
Corrosion resistance class (CRC)	0 - No corrosion stress
Storage temperature	-20 °C ... 70 °C
Relative air humidity	0 - 90 %
Degree of protection	IP40
Ambient temperature	-15 °C ... 40 °C
Thermal class according to EN 60034-1	F
Certification	RCM compliance mark c UL us - Recognized (OL)
Total output inertia moment	4.46 kgcm ²
Nominal torque	6.3 Nm
Peak torque	22.4 Nm
Stall torque	8.6 Nm
Permissible axial shaft load	200 N
Permissible radial shaft load	1110 N
MTTF, subcomponent	190 years, rotor position sensor
MTTFd, subcomponent	380 years, rotor position sensor
Product weight	7100 g
Interface code, motor out	100A
Note on materials	Contains paint-wetting impairment substances RoHS-compliant
Conforms to standard	IEC 60034