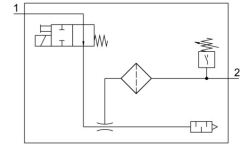


Vacuum generator OVEM-14-H-B-QO-ON-N-2P

Part number: 539996

FESTO



Data sheet

Feature	Value
KC characters	KC EMC
Nominal width of Laval nozzle	1.4 mm
Width dimension	20 mm
Type code	OVEM
Muffler construction type	Open
Mounting position	Any
Ejector characteristics	High vacuum Standard
Grade of filtration	40 µm
Manual override	Non-detenting Additionally via operating buttons
Integrated function	Shut off valve, electric Compressed air filter Pneumatic muffler open Vacuum switch
Design	Modular
Short-circuit protection	yes
Measured variable	Relative pressure
Measuring principle	Piezoresistive
Switching element function	N/C contact N/O contact
Switching function	Window comparator Threshold value comparator
Symbol	00992100
Valve function	Open
Reverse polarity protection	for all electrical connections
Switching input to standard	IEC 61131-2
Display type	4-character alphanumeric Back-lit LCD
Display range	-0.999 bar ... 0 bar
Displayable unit(s)	bar
Setting range threshold value	-0.999 bar ... 0 bar
Setting range hysteresis	-0.9 bar ... 0 bar
Setting options	Via display and pushbuttons
Switching position indication	LCD
Switching status indication	Optical
Operating pressure	2 bar ... 8 bar
Operating pressure for max. vacuum	3.6 bar

Feature	Value
Max. vacuum	93 %
Nominal operating pressure	6 bar
Max. suction rate with respect to atmosphere	50.5 l/min
Air supply time at nominal operating pressure	0.6 s
DC operating voltage range	20.4 V ... 27.6 V
Duty cycle	100%
Inductive protective circuit	Adapted to MZ, MY and ME coils
Insulation voltage	50 V
Idle current	<70 mA
Max. output current	100 mA
Residual current	0.1 mA
Switching output	2xPNP
Voltage drop	≤1.5 V
Coil characteristics	24 V DC: low-current phase 0.3 W, high-current phase 2.55 W
Surge resistance	0.8 kV
Overload protection	Available
Contamination level	3
Operating medium	Compressed air as per ISO 8573-1:2010 [7:4:4]
Information on operating and pilot media	Operation with oil lubrication not possible
CE marking (see declaration of conformity)	As per EU EMC directive
Corrosion resistance class (CRC)	2 - Moderate corrosion stress
Temperature of medium	0 °C ... 50 °C
Relative air humidity	5 - 85 %
Noise level at nominal operating pressure	77 dB(A)
Degree of protection	IP65
Protection class	III
Ambient temperature	0 °C ... 50 °C
Certification	RCM compliance mark c UL us - Listed (OL)
Max. tightening torque	0.8 Nm with internal thread 2.5 Nm with through-hole
Product weight	380 g
Pressure measuring range	-1 bar ... 0 bar
Accuracy in ± % FS	3 %FS
Reproducibility, switching value FS	0.6 %
Input switching logic	PNP (positive switching)
Electrical connection	5-pin M12x1 Plug
Type of mounting	With through-hole With internal thread With accessories
Pneumatic connection 1	QS-8
Pneumatic connection 3	Pneumatic muffler integrated
Vacuum connection	QS-8
Note on materials	Contains paint-wetting impairment substances RoHS-compliant
Seals material	NBR
Female nozzle material	POM
Compressed air filter material	Fabric PA Sintered steel
Material of filter housing	PA-reinforced
Housing material	Die-cast aluminum PA-reinforced

Feature	Value
Muffler material	Wrought aluminum alloy PU foam
Material of screws	Steel
Inspection window material	PA
Material of plug housing	Brass, nickel-plated
Material of pin contacts	Brass, gold-plated
Material of pins	Steel
Material of keypad	TPE-U
Material of pneumatic fitting	Brass, nickel-plated