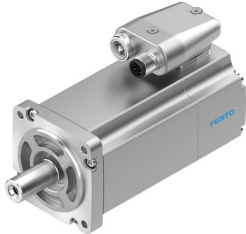


Servo motor EMME-AS-60-S-LS-AS

Part number: 2089698

FESTO



Data sheet

Feature	Value
Number of pole pairs	3
Type code	EMME-AS
Rotor position sensor	Absolute encoder, single-turn
Rotor position sensor interface	HIPERFACE®
Rotor position sensor measuring principle	Capacitive
Max. rotational speed	5131 1/min
Nominal rotary speed	3000 1/min
Continuous stall current	0.9 A
Insulation protection class	F
Motor constants	0.75 Nm/A
Nominal operating voltage DC	360 V
Motor nominal power	190 W
DC nominal voltage	360 V
Motor nominal current	0.8 A
Typical rotor position sensor resolution	12 bit
Rotor position encoder, typical angular accuracy	20 arcmin
Rotor position encoder, sinusoidal/cosinusoidal periods per revolution	16
Phase-phase winding resistance	26.4 Ohm
Winding inductance phase-phase	31.9 mH
Type of winding switch	Star inside
Peak current	3.6 A
Voltage constant, phase-to-phase	49.6 mVmin
Rating class according to EN 60034-1	S1
CE marking (see declaration of conformity)	As per EU EMC directive As per EU low voltage directive
Corrosion resistance class (CRC)	0 - No corrosion stress
Storage temperature	-20 °C ... 70 °C
Relative air humidity	0 - 90 %
Degree of protection	IP21
Ambient temperature	-10 °C ... 40 °C
Certification	RCM compliance mark c UL us - Recognized (OL)
Total output inertia moment	0.22 kgcm ²
Nominal torque	0.6 Nm
Peak torque	2.8 Nm
Stall torque	0.7 Nm

Feature	Value
Permissible axial shaft load	50 N
Permissible radial shaft load	250 N
MTTFd, subcomponent	340 years, rotor position sensor
Product weight	1300 g
Electrical connection technology	Plug
Note on materials	Contains paint-wetting impairment substances RoHS-compliant
Conforms to standard	IEC 60034