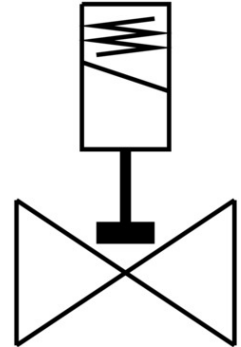


Air solenoid valve

VZWD-L-M22C-M-G18-25-V-2AP4-22

FESTO

Part number: 1491913



Data sheet

| Feature | Value |
|----------------------------------|--|
| Type code | VZWD |
| Design | Directly controlled poppet valve |
| Actuation type | Electrical |
| Sealing principle | Soft |
| Mounting position | Any |
| Type of mounting | Line installation |
| Fitting connection | G1/8 |
| Electrical connection | Form A Plug as per EN 175301-803 Rectangular design |
| Nominal width | 2.5 mm |
| Valve function | 2/2, closed, monostable |
| Manual override | None |
| Flow direction | Non-reversible |
| Medium | Compressed air as per ISO 8573-1:2010 [7:4:4] Inert gas Mineral oil Water Neutral liquids Other flow media on request |
| Nominal pressure of fitting PN | 100 |
| Differential pressure | 0 bar |
| Coil characteristics | 110 V AC: 50/60 Hz, initial power 19.0 VA, holding power 16.0 VA |
| Insulation class | F |
| Permissible voltage fluctuations | +/- 10 % |
| Duty cycle | 100% |
| Reset method | Mechanical spring |
| Type of control | Direct |
| Symbol | 00992979 |
| Medium pressure | 0 bar ... 22 bar |
| Max. viscosity | 22 mm ² /s |
| Temperature of medium | -10 °C ... 80 °C |

| Feature | Value |
|--|--|
| Ambient temperature | -10 °C ... 35 °C |
| Leak rate to EN 12266-1 | A |
| Flow rate Kv | 0.16 m³/h |
| Standard nominal flow rate | 170 l/min |
| On switching time | 20 ms |
| Switching time off | 18 ms |
| Note on materials | Contains paint-wetting impairment substances RoHS-compliant |
| Housing material | Cast brass |
| Material number of housing | CW617N |
| Seals material | FPM |
| Product weight | 550 g |
| Degree of protection | IP65 |
| CE marking (see declaration of conformity) | As per EU low voltage directive |
| Corrosion resistance class (CRC) | 1 - Low corrosion stress |