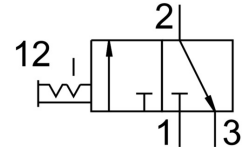


Shut off valve MS6N-EM1-1/2-S

Part number: 541290

FESTO



Data sheet

Feature	Value
Type code	MS6N-EM1
Design	Rotary gate valve
Actuation type	Manual
Exhaust air function	Without flow control option
Type of control	Direct
Symbol	00991670
Valve function	3/2, bistable
Operating pressure	0 bar ... 18 bar
C value	30.8 l/sbar
b-value	0.57
Standard nominal flow rate	8700 l/min
Operating medium	Compressed air as per ISO 8573-1:2010 [7:4:4] Inert gas
Information on operating and pilot media	Operation with oil lubrication possible (required for further use)
Corrosion resistance class (CRC)	2 - Moderate corrosion stress
Note on materials	RoHS-compliant
Temperature of medium	-10 °C ... 60 °C
Ambient temperature	-10 °C ... 60 °C
Type of mounting	Optionally: Line installation With accessories
Mounting position	Any
Flow direction	Non-reversible
Product weight	655 g
Pneumatic connection 1	1/2 NPT
Pneumatic connection 2	1/2 NPT
Pneumatic connection 3	Pneumatic muffler integrated Not ducted
Seals material	TPE-U(PU)
Housing material	Die-cast aluminum
For use in the food industry	See supplementary material information