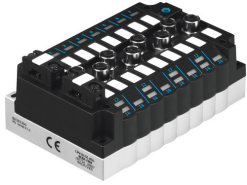


# Electrical interface CPV10-GE-ASI-8E8A-Z-M8-CE

Part number: 552560

FESTO



## Data sheet

Feature	Value
Type code	CPV10
Fieldbus interface	AS-Interface: flat cable plug Load voltage: flat cable plug
Device-specific diagnostics	Short circuit/overload of inputs
Max. no. of valve positions	8
Max. no. of solenoid coils	8
Reverse polarity protection	for all electrical operating voltage connections
Number of slaves per device	2
AS-Interface DC operating voltage range	26.5 V ... 31.6 V
Debounce time at inputs	3 ms
Information concerning load voltage	Via load voltage connection (24 V DC)
Load voltage range DC	21.6 V ... 26.4 V
Max. number of inputs	8
Nominal operating voltage DC AS-Interface	26.5 V
Nominal voltage DC	24 V
AS interface residual ripple	20 mVss
Load voltage residual ripple	4 Vss
Switching level	Signal 0: $\leq 5$ V Signal 1: $\geq 11$ V
Current consumption with load voltage from AS-Interface and load voltage connection	Inputs: 200 mA Electronics: 40 mA Valves: 240 mA (depending on pneumatic valve type)
Corrosion resistance class (CRC)	2 - Moderate corrosion stress
Storage temperature	-20 °C ... 70 °C
Relative air humidity	0 - 95 % Non-condensing
Degree of protection	IP65 In mounted state
Ambient temperature	-5 °C ... 50 °C
Input characteristics	As per IEC 1131-2, type 02
Input switching logic	PNP (positive switching)
Addressing range	1A ... 31A (0) 1B ... 31B Setting using AS-Interface addressing device
Galvanic isolation fieldbus interface	Optocoupler
LED display (bus-specific)	AS-i: AS-Interface mode Aux/Pwr: AS-Interface power supply Fault: AS interface fault

Feature	Value
LED display (product-specific)	0 ... 7: switching status of inputs 12/14: switching status of pneumatic valves (on pneumatic valve)
Product identification	ID code: ID=Ah, ID1=7h, ID2=7h IO code: 7h Profile: S-7.A.7
Cover material	PA-reinforced
Seals material	CR NBR
Housing material	Die-cast aluminum
Note on materials	RoHS-compliant