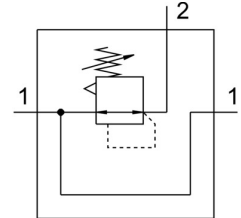
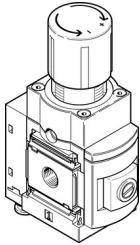


# Precision pressure regulator MS6N-LRPB-1/2-D4-A8-BI

Part number: 534940

FESTO



## Data sheet

Feature	Value
Size	6
Type code	MS6-LRPB
Series	MS
Actuator lock	Rotary knob with detent
Mounting position	Any
Design	Pilot-controlled precision diaphragm regulator
Controller function	Outlet pressure constant With secondary exhausting
Symbol	00991973
Pressure gauge	G1/8 prepared
Operating pressure	1 bar ... 14 bar
Operating pressure	0.1 MPa ... 1.4 MPa
Pressure regulation range	0.05 bar ... 2.5 bar
Max. pressure hysteresis	0.02 bar
Flow rate of secondary venting	≥450 l/min
Standard nominal flow rate	≥2300 l/min
Operating medium	Compressed air as per ISO 8573-1:2010 [7:4:4] Inert gas
Information on operating and pilot media	Operation with oil lubrication not possible
Corrosion resistance class (CRC)	2 - Moderate corrosion stress
Storage temperature	-10 °C ... 60 °C
Temperature of medium	-10 °C ... 60 °C
Ambient temperature	-10 °C ... 60 °C
Product weight	1000 g
Type of mounting	Optionally: Front panel mounting Line installation With accessories
Pneumatic connection 1	NPT1/2-14
Pneumatic connection 2	NPT1/2-14
Pneumatic connection 3	G1/4
Note on materials	Free of copper and PTFE RoHS-compliant
Seals material	NBR
Housing material	Aluminum