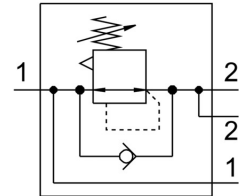
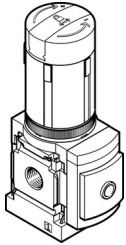


Pressure regulator MS6-LRB-1/2-D6-A4-AS

Part number: 530326

FESTO



Data sheet

Feature	Value
Size	6
For use in the food industry	See supplementary material information
Type code	MS6-LRB
Series	MS
Actuator lock	Rotary knob with detent can be closed with accessories
Mounting position	Any
Design	Directly controlled diaphragm regulator with continuous compressed air supply
Controller function	Outlet pressure constant With primary pressure compensation With secondary exhausting
Symbol	00995310
Pressure gauge	G1/4 prepared
Operating pressure	0.8 bar ... 20 bar
Pressure regulation range	0.3 bar ... 7 bar
Max. pressure hysteresis	0.25 bar
Standard nominal flow rate	6300 l/min
Operating medium	Compressed air as per ISO 8573-1:2010 [7:4:4] Inert gas
Information on operating and pilot media	Operation with oil lubrication possible (required for further use)
Corrosion resistance class (CRC)	2 - Moderate corrosion stress
Storage temperature	-10 °C ... 60 °C
Temperature of medium	-10 °C ... 60 °C
Ambient temperature	-10 °C ... 60 °C
Product weight	747 g
Type of mounting	Optionally: Front panel mounting Line installation With accessories
Pneumatic connection 1	G1/2
Pneumatic connection 2	G1/2
Note on materials	RoHS-compliant
Material of operator panel	PA POM
Seals material	NBR
Housing material	Die-cast aluminum

Feature	Value
Diaphragm material	NBR