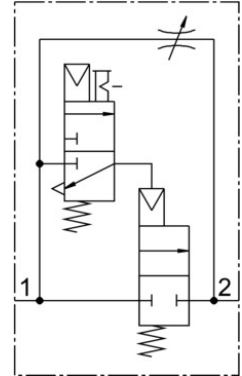


Soft start valve MS6N-DE-1/4-V230

Part number: 532047

FESTO



Data sheet

| Feature | Value |
|--|--|
| For use in the food industry | See supplementary material information |
| Type code | MS6N-DE |
| Actuation type | Electrical |
| Mounting position | Any |
| Manual override | Detenting Non-detenting |
| Design | Piston seat |
| Reset method | Mechanical spring |
| Type of control | Pilot-controlled |
| Pilot air supply port | Internal |
| Flow direction | Non-reversible |
| Symbol | 00991501 |
| Valve function | 2/2 |
| Switching position indication | with accessories |
| Operating pressure | 4 bar ... 18 bar |
| b-value | 0.54 |
| C value | 11.22 l/sbar |
| Standard nominal flow rate | 2700 l/min |
| Duty cycle | 100% |
| Coil characteristics | 230 V AC: 50/60 Hz, initial power 3.0 VA, holding power 2.4 VA |
| Operating medium | Compressed air as per ISO 8573-1:2010 [7:4:4] Inert gas |
| Information on operating and pilot media | Operation with oil lubrication possible (required for further use) |
| Corrosion resistance class (CRC) | 2 - Moderate corrosion stress |
| Temperature of medium | -10 °C ... 60 °C |
| Degree of protection | IP65 |
| Ambient temperature | -10 °C ... 60 °C |
| Certification | c UL - Recognized (OL) |
| Product weight | 680 g |

| Feature | Value |
|------------------------|--|
| Electrical connection | Form C Plug as per DIN EN 175301-803 Rectangular design |
| Signal status display | With accessories |
| Type of mounting | Optionally: Line installation With accessories |
| Pneumatic connection 1 | 1/4 NPT |
| Pneumatic connection 2 | 1/4 NPT |
| Note on materials | Free of copper and PTFE RoHS-compliant |
| Seals material | NBR |
| Housing material | Die-cast aluminum |