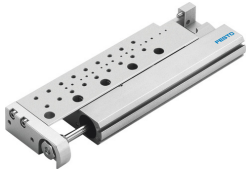


Mini slide SLF-10-10-P-A

Part number: 170506

FESTO



Data sheet

Feature	Value
Stroke	10 mm
Adjustable end position range/length	5 mm
Piston diameter	10 mm
Type code	SLF
Drive unit operating mode	Yoke
Cushioning	Elastic cushioning rings/pads at both ends
Mounting position	Any
Guide	Ball bearing cage guide
Design	Yoke Piston Piston rod Ball roller guide Slide
Position sensing	For proximity sensor
Symbol	00991737
Operating pressure	1 bar ... 10 bar
Mode of operation	Double-acting
Operating medium	Compressed air as per ISO 8573-1:2010 [7:4:4]
Information on operating and pilot media	Operation with oil lubrication possible (required for further use)
Corrosion resistance class (CRC)	0 - No corrosion stress
Ambient temperature	-20 °C ... 60 °C
Impact energy in the end positions	0.05 J
Max. force F _y	170 N
Max. force F _z	170 N
Max. torque M _x	0.6 Nm
Max. torque M _y	0.6 Nm
Max. torque M _z	0.5 Nm
Theoretical force at 6 bar, retracting	40 N
Theoretical force at 6 bar, advancing	47 N
Moving mass	41 g
Basic weight with 0 mm stroke	135 g
Product weight	90 g
Alternative connections	See product drawing
Type of mounting	With through-hole
Pneumatic connection	M5
Note on materials	Free of copper and PTFE
Cover material	Wrought aluminum alloy

Feature	Value
Seals material	HNBR
Housing material	Wrought aluminum alloy
Piston rod material	High-alloy stainless steel