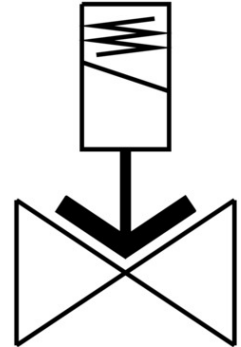
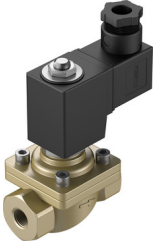


# Air solenoid valve

## VZWF-B-L-M22C-G14-135-V-3AP4-10

FESTO

Part number: 1492334



### Data sheet

| Feature                          | Value  |
|----------------------------------|--|
| Type code                        | VZWF   |
| Design                           | Diaphragm valve<br>Force pilot operated  |
| Actuation type                   | Electrical   |
| Sealing principle                | Soft   |
| Mounting position                | Magnet, upright  |
| Type of mounting                 | Line installation  |
| Fitting connection               | G1/4   |
| Electrical connection            | Form A<br>Plug<br>as per EN 175301-803<br>Rectangular design   |
| Nominal width                    | 13.5 mm  |
| Valve function                   | 2/2, closed, monostable  |
| Manual override                  | None   |
| Flow direction                   | Non-reversible   |
| Medium                           | Compressed air as per ISO 8573-1:2010 [7:-:-]<br>Inert gas<br>Mineral oil<br>Water<br>Neutral liquids<br>Other flow media on request |
| Nominal pressure of fitting PN   | 40   |
| Differential pressure            | 0 bar  |
| Coil characteristics             | 230 V AC: 50/60 Hz, initial power 18.0 VA, holding power 15.0 VA   |
| Permissible voltage fluctuations | +/- 10 %   |
| Symbol                           | 00992976   |
| Medium pressure                  | 0 bar ... 10 bar   |
| Max. viscosity                   | 22 mm <sup>2</sup> /s  |
| Temperature of medium            | -10 °C ... 80 °C   |
| Ambient temperature              | -10 °C ... 35 °C   |
| Leak rate to EN 12266-1          | A  |
| Flow rate Kv                     | 1.8 m <sup>3</sup> /h  |

| <b>Feature</b>                             | <b>Value</b>   |
|--|--|
| Standard nominal flow rate                 | 1920 l/min   |
| On switching time                          | 130 ms   |
| Switching time off                         | 180 ms   |
| Note on materials                          | Contains paint-wetting impairment substances<br>RoHS-compliant |
| Housing material                           | Cast brass   |
| Material number of housing                 | CW617N   |
| Seals material                             | FPM  |
| Material of screws                         | High-alloy stainless steel                                     |
| Material number of screw                   | 1.4301   |
| Product weight                             | 1000 g   |
| Degree of protection                       | IP65   |
| CE marking (see declaration of conformity) | As per EU low voltage directive                                |
| Corrosion resistance class (CRC)           | 1 - Low corrosion stress                                       |