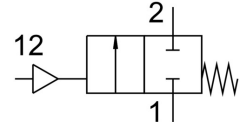


# Angle seat valve

## VZXF-L-M22C-M-A-G2-450-M1-V4V4T-50-4

FESTO

Part number: 1002522



### Data sheet

| Feature                                    | Value                                                             |
|--------------------------------------------|-------------------------------------------------------------------|
| Type code                                  | VZXF                                                              |
| Design                                     | Poppet valve with piston actuator                                 |
| Actuation type                             | Pneumatic                                                         |
| Sealing principle                          | Soft                                                              |
| Mounting position                          | Any                                                               |
| Type of mounting                           | Line installation                                                 |
| Cable connection                           | Threaded sleeve G2 as per DIN ISO 228                             |
| Nominal width                              | 45 mm                                                             |
| Valve function                             | 2/2, closed, monostable                                           |
| Flow direction                             | Non-reversible                                                    |
| Medium pressure                            | 0 bar ... 4 bar                                                   |
| Nominal pressure of fitting PN             | 40                                                                |
| Exhaust air function                       | Without flow control option                                       |
| Reset method                               | Mechanical spring                                                 |
| Type of control                            | Externally controlled                                             |
| Pneumatic connection                       | Internal thread G1/8                                              |
| Operating pressure                         | 6 bar ... 10 bar                                                  |
| Symbol                                     | 00991367                                                          |
| Medium                                     | Vapor<br>Inert gas<br>Filtered compressed air, 200 µm filter mesh |
| Flow direction                             | Above valve seat, for gaseous media                               |
| Operating medium                           | Compressed air as per ISO 8573-1:2010 [7:4:4]                     |
| Max. viscosity                             | 600 mm <sup>2</sup> /s                                            |
| Temperature of medium                      | -40 °C ... 200 °C                                                 |
| Ambient temperature                        | -10 °C ... 60 °C                                                  |
| Flow rate Kv                               | 34.5 m <sup>3</sup> /h                                            |
| Note on materials                          | Contains paint-wetting impairment substances<br>RoHS-compliant    |
| Valve housing material                     | Cast stainless steel                                              |
| Material number, fitting housing           | 1.4408                                                            |
| Spindle seal material                      | PTFE                                                              |
| Seat seal material                         | PTFE                                                              |
| Product weight                             | 3500 g                                                            |
| CE marking (see declaration of conformity) | as per EU pressure equipment directive                            |
| Corrosion resistance class (CRC)           | 3 - High corrosion stress                                         |

| Feature                | Value                      |
|------------------------|----------------------------|
| Drive housing material | High-alloy stainless steel |