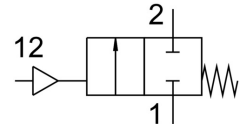


# Angle seat valve

## VZXF-L-M22C-M-A-G34-160-H3B1-50-16

FESTO

Part number: 1002502



### Data sheet

| Feature                          | Value   |
|----------------------------------|---|
| Type code                        | VZXF  |
| Design                           | Poppet valve with piston actuator                                 |
| Actuation type                   | Pneumatic   |
| Sealing principle                | Soft  |
| Mounting position                | Any   |
| Type of mounting                 | Line installation   |
| Cable connection                 | Threaded sleeve G3/4 as per DIN ISO 228                           |
| Nominal width                    | 16 mm   |
| Valve function                   | 2/2, closed, monostable   |
| Flow direction                   | Non-reversible  |
| Medium pressure                  | 0 bar ... 16 bar  |
| Nominal pressure of fitting PN   | 16  |
| Exhaust air function             | Without flow control option                                       |
| Reset method                     | Mechanical spring   |
| Type of control                  | Externally controlled   |
| Pneumatic connection             | Internal thread G1/8  |
| Operating pressure               | 6 bar ... 10 bar  |
| Symbol                           | 00991367  |
| Medium                           | Vapor<br>Inert gas<br>Filtered compressed air, 200 µm filter mesh |
| Flow direction                   | Above valve seat, for gaseous media                               |
| Operating medium                 | Compressed air as per ISO 8573-1:2010 [7:4:4]                     |
| Max. viscosity                   | 600 mm <sup>2</sup> /s  |
| Temperature of medium            | -10 °C ... 80 °C  |
| Ambient temperature              | -10 °C ... 60 °C  |
| Flow rate Kv                     | 6.7 m <sup>3</sup> /h   |
| Note on materials                | Contains paint-wetting impairment substances<br>RoHS-compliant    |
| Valve housing material           | Red brass   |
| Material number, fitting housing | CC499K  |
| Spindle seal material            | NBR   |
| Seat seal material               | PTFE  |
| Product weight                   | 1300 g  |
| Corrosion resistance class (CRC) | 1 - Low corrosion stress  |
| Drive housing material           | Brass   |