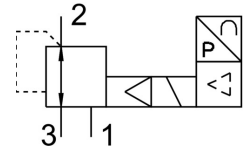


# Proportional pressure control valve VPPM-12L-L-1-N12-0L10H-V1P-S1C1

FESTO

Part number: 576681



## Data sheet

Feature	Value
KC characters	KC EMC
Nominal width pressurization	12 mm
Exhaust nominal width	12 mm
Type code	VPPM
Actuation type	Electrical
Sealing principle	Soft
Mounting position	Any
Design	Pilot-controlled diaphragm regulator
Short-circuit protection	For all electrical connections
Safety instructions	VPPM safety position: if the supply cable breaks, the outlet pressure is maintained in uncontrolled form.
Symbol	00995303
Reverse polarity protection	for all electrical connections
Reset method	Mechanical spring
Type of control	Pilot-controlled
Valve function	3-way proportional pressure control valve
Display type	Back-lit LCD
Pressure regulation range	0.1 bar ... 10 bar
Inlet pressure 1	0 bar ... 11 bar
Max. pressure hysteresis	0.05 bar
Standard nominal flow rate	7000 l/min
DC operating voltage range	21.6 V ... 26.4 V
Max. current consumption	500 mA
Duty cycle	100%
Max. electrical power consumption	12 W
Residual ripple	10 %
Switching output	PNP
Analog output signal range	0 - 10 V
Analog input signal range	0 - 10 V
Operating medium	Compressed air as per ISO 8573-1:2010 [7:4:4] Inert gas
Information on operating and pilot media	Operation with oil lubrication not possible
CE marking (see declaration of conformity)	As per EU EMC directive
Corrosion resistance class (CRC)	2 - Moderate corrosion stress
Temperature of medium	10 °C ... 50 °C
Degree of protection	IP65

<b>Feature</b>	<b>Value</b>
Ambient temperature	0 °C ... 50 °C
Certification	RCM compliance mark c UL us - Listed (OL)
Product weight	2050 g
Linearity error FS	1 %
Temperature coefficient	0.04 %/K
Repetition accuracy FS	0.5 %
Electrical connection	8-pin M12 Plug
Type of mounting	Optionally: With through-hole With accessories
Pneumatic connection 1	1/2 NPT
Pneumatic connection 2	1/2 NPT
Pneumatic connection 3	1/2 NPT
Note on materials	RoHS-compliant
Housing material	Wrought aluminum alloy Anodized