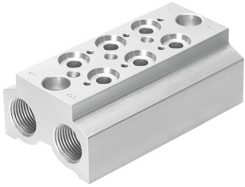


Connection block CPE14-3/2-PRS-3/8-3-NPT

Part number: 550611

FESTO



Data sheet

Feature	Value
Width dimension	20 mm
Type code	CPE14-PRS
Mounting position	Any
Max. no. of valve positions	3
Max. no. of pressure zones	2
Operating pressure	-0.896 bar ... 9.997 bar
Corrosion resistance class (CRC)	2 - Moderate corrosion stress
Temperature of medium	-5 °C ... 50 °C
Ambient temperature	-5 °C ... 50 °C
Max. tightening torque for valve mounting	1.22 Nm
Product weight	226.233 g
Manifold block type of mounting	With through-hole
Pneumatic valve mounting type	With internal thread
Pneumatic connection 1	3/8 NPT
Pneumatic connection 3	3/8 NPT
Pneumatic connection 5	3/8 NPT
Note on materials	RoHS-compliant
Manifold rail material	Wrought aluminum alloy