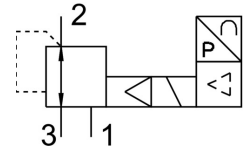


# Proportional pressure control valve MPPE-3-1/2-10-420-B

FESTO

Part number: 161177



## Data sheet

Feature	Value
KC characters	KC EMC
Nominal width pressurization	11 mm
Exhaust nominal width	12 mm
Type code	MPPE
Actuation type	Electrical
Sealing principle	Soft
Mounting position	Any
Design	Pilot-controlled piston control valve
Short-circuit protection	For all electrical connections
Safety instructions	MPPE-B safety position: if the supply cable breaks, the outlet pressure is maintained in uncontrolled form.
Symbol	00995303
Reverse polarity protection	for all electrical connections
Valve function	3-way proportional pressure control valve closed
Operating pressure	≤12 bar
Pressure regulation range	0 bar ... 10 bar
Inlet pressure 1	11 bar ... 12 bar
Max. pressure hysteresis	0.05 bar
Switching time off	535 ms
On switching time	140 ms
DC operating voltage range	18 V ... 30 V
Reference voltage	10 V
Residual ripple	10 %
Setpoint/actual values	Current type 4–20 mA
Operating medium	Compressed air as per ISO 8573-1:2010 [7:4:4] Inert gas
Information on operating and pilot media	Operation with oil lubrication possible (required for further use)
CE marking (see declaration of conformity)	As per EU EMC directive
Corrosion resistance class (CRC)	2 - Moderate corrosion stress
Temperature of medium	0 °C ... 60 °C
Degree of protection	IP65
Ambient temperature	0 °C ... 50 °C
Certification	RCM compliance mark
Product weight	2400 g

<b>Feature</b>	<b>Value</b>
Electrical connection	8-pin M16x0.75 Plug as per DIN 45326 Round design
Type of mounting	With through-hole
Pneumatic connection 1	G1/2
Pneumatic connection 2	G1/2
Pneumatic connection 3	G1/2
Note on materials	RoHS-compliant
Housing material	Wrought aluminum alloy
Diaphragm material	NBR