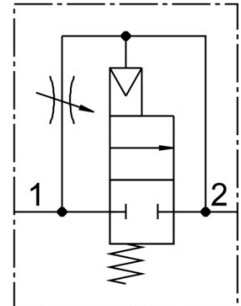


Shut off valve HEL-1-D-MAXI-NPT

Part number: 173923

FESTO



Data sheet

Feature	Value
Width dimension	65 mm
Type code	HEL
Exhaust air function	With flow control option
Actuation type	Pneumatic
Sealing principle	Soft
Mounting position	Any
Manual override	None
Design	Piston gate valve
Reset method	Mechanical spring
Type of control	Direct
Flow direction	Non-reversible
Symbol	00991513
Valve function	2/2, closed, monostable
Operating pressure	3 bar ... 16 bar
b-value	0.54
C value	28.3 l/sbar
Standard nominal flow rate	6500 l/min
Operating medium	Compressed air as per ISO 8573-1:2010 [7:4:4] Inert gas
Information on operating and pilot media	Operation with oil lubrication possible (required for further use)
Corrosion resistance class (CRC)	2 - Moderate corrosion stress
Air quality class at the output	Compressed air as per ISO 8573-1:2010 [7:4:4] Inert gas
Temperature of medium	-10 °C ... 60 °C
Ambient temperature	-10 °C ... 60 °C
Product weight	394 g
Type of mounting	Line installation With accessories
Pneumatic connection 1	1 NPT
Pneumatic connection 2	1 NPT
Note on materials	RoHS-compliant
Seals material	NBR

Feature	Value
Housing material	Die-cast aluminum