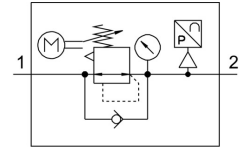


# Electric pressure regulator MS6N-LRE-1/2-D6-PU

Part number: 536541

FESTO



## Data sheet

Feature	Value
Size	6
Type code	MS6N-LRE
Series	MS
Mounting position	Any Preferably vertical
Design	Electrically adjustable pressure regulator
Short-circuit protection	For all electrical connections
Controller function	Outlet pressure constant With primary pressure compensation With secondary exhausting
Symbol	00991879
Pressure gauge	with pressure gauge
Operating pressure	0.8 bar ... 20 bar
Operating pressure	0.08 MPa ... 2 MPa
Pressure regulation range	0.3 bar ... 7 bar
Max. pressure hysteresis	0.25 bar
Standard nominal flow rate	6500 l/min
Analog output	0 - 10 V
Duration of control at 25°C	Max. 90 s
Design of inputs	as per IEC 61131-2 No galvanic isolation
Nominal operating voltage DC	24 V
Current consumption at nominal operating voltage	max. 1 A
Current consumption	max 3.5 A at 24 V DC
Control duration/interval ratio	1:3
Permissible voltage fluctuations	+/- 10 %
Operating medium	Compressed air as per ISO 8573-1:2010 [7:4:4] Inert gas
Information on operating and pilot media	Operation with oil lubrication possible (required for further use)
CE marking (see declaration of conformity)	As per EU EMC directive
Corrosion resistance class (CRC)	2 - Moderate corrosion stress
Storage temperature	-10 °C ... 50 °C
For use in the food industry	See supplementary material information
Temperature of medium	0 °C ... 50 °C
Degree of protection	IP65
Ambient temperature	0 °C ... 50 °C
Product weight	1280 g

<b>Feature</b>	<b>Value</b>
Analog outputs, absolute precision at 25°C	± 3%
Cable interface	Inputs: M12x1 plug, 5-pin Outputs: M8x1 plug, 3-pin
Type of mounting	Optionally: Line installation With accessories
Pneumatic connection 1	1/2 NPT
Pneumatic connection 2	1/2 NPT
Seals material	NBR
Housing material	Die-cast aluminum
Diaphragm material	NBR