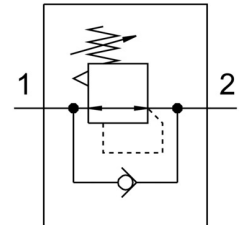


# Pressure regulator LR-1-D-7-O-MAXI

Part number: 162605

FESTO



## Data sheet

Feature	Value
Size	Maxi
Maritime classification	See certificate
Type code	LR
Series	D
Actuator lock	Rotary knob with detent
Mounting position	Any
Design	Pilot-controlled piston control valve
Controller function	Outlet pressure constant With secondary exhausting
Symbol	00991559
Pressure gauge	G1/4 prepared
Operating pressure	0 bar ... 16 bar
Pressure regulation range	0.5 bar ... 7 bar
Max. pressure hysteresis	0.4 bar
Standard nominal flow rate	12500 l/min
Operating medium	Compressed air as per ISO 8573-1:2010 [7:4:4] Inert gas
Information on operating and pilot media	Operation with oil lubrication possible (required for further use)
Corrosion resistance class (CRC)	2 - Moderate corrosion stress
Air quality class at the output	Compressed air as per ISO 8573-1:2010 [7:4:4] Inert gas
Temperature of medium	-10 °C ... 60 °C
Ambient temperature	-10 °C ... 60 °C
Product weight	1100 g
Type of mounting	Front panel mounting Line installation With accessories
Pneumatic connection 1	G1
Pneumatic connection 2	G1
Note on materials	Free of copper and PTFE RoHS-compliant
Material of sub-base	Die-cast zinc
Seals material	NBR
Housing material	Die-cast zinc