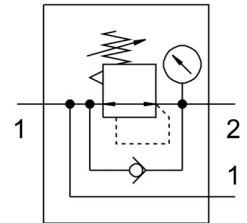


# Pressure regulator MS4-LRB-1/4-D6-AS-BD

Part number: 529480

**FESTO**



## Data sheet

Feature	Value
Size	4
For use in the food industry	See supplementary material information
Type code	MS4-LRB
Series	MS
Actuator lock	Rotary knob with detent can be closed with accessories
Mounting position	Any
Design	Directly controlled diaphragm regulator with continuous compressed air supply
Controller function	Outlet pressure constant With primary pressure compensation With secondary exhausting With return flow function
Symbol	00995251
Pressure gauge	with pressure gauge
Operating pressure	0.8 bar ... 14 bar
Pressure regulation range	0.3 bar ... 7 bar
Max. pressure hysteresis	0.25 bar
Standard nominal flow rate	840 l/min
Operating medium	Compressed air as per ISO 8573-1:2010 [7:4:4] Inert gas
Information on operating and pilot media	Operation with oil lubrication possible (required for further use)
Corrosion resistance class (CRC)	2 - Moderate corrosion stress
Storage temperature	-10 °C ... 60 °C
Temperature of medium	-10 °C ... 60 °C
Ambient temperature	-10 °C ... 60 °C
Product weight	222 g
Type of mounting	Optionally: Front panel mounting Line installation With accessories
Pneumatic connection 1	G1/4
Pneumatic connection 2	QS-8
Note on materials	RoHS-compliant
Material of sub-base	Die-cast aluminum
Material of operator panel	PA POM

Feature	Value
Seals material	NBR
Housing material	Die-cast aluminum
Diaphragm material	NBR