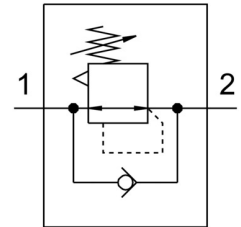


Pressure regulator LR-1/2-D-O-MAXI

Part number: 186456

FESTO



Data sheet

| Feature | Value |
|--|--|
| Size | Maxi |
| Maritime classification | See certificate |
| Type code | LR |
| Series | D |
| Actuator lock | Rotary knob with detent |
| Mounting position | Any |
| Design | Pilot-controlled piston control valve |
| Controller function | Outlet pressure constant With secondary exhausting |
| Symbol | 00991559 |
| Pressure gauge | G1/4 prepared |
| Operating pressure | 0 bar ... 16 bar |
| Pressure regulation range | 0.5 bar ... 12 bar |
| Max. pressure hysteresis | 0.4 bar |
| Standard nominal flow rate | 10500 l/min |
| Operating medium | Compressed air as per ISO 8573-1:2010 [7:4:4] Inert gas |
| Information on operating and pilot media | Operation with oil lubrication possible (required for further use) |
| Air quality class at the output | Compressed air as per ISO 8573-1:2010 [7:4:4] Inert gas |
| Temperature of medium | -10 °C ... 60 °C |
| Ambient temperature | -10 °C ... 60 °C |
| Product weight | 1100 g |
| Type of mounting | Front panel mounting Line installation With accessories |
| Pneumatic connection 1 | G1/2 |
| Pneumatic connection 2 | G1/2 |
| Note on materials | Free of copper and PTFE RoHS-compliant |
| Material of sub-base | Die-cast zinc |
| Seals material | NBR |
| Housing material | Die-cast zinc |