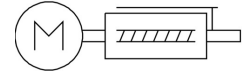
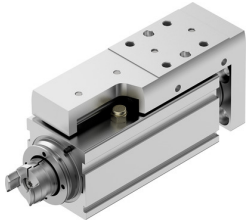


# Mini slide EGSC-BS-KF-32-25-8P

Part number: 8048306

FESTO



## Data sheet

Feature	Value
LABS-Conformity	VDMA24364 zone III
Working stroke	25 mm
Size	32
Stroke reserve	0 mm
Reversing backlash	150 µm
Screw diameter	8 mm
Spindle pitch	8 mm/U
Type code	EGSC
Mounting position	Any
Guide	Recirculating ball bearing guide
Design	Electrical mini-slide with ball screw drive
Motor type	Stepper motor Servo motor
Homing	Fixed stop block positive Fixed stop block, negative Reference switch
Spindle type	Ball screw drive
Symbol	00992069
Position sensing	For proximity sensor
Max. acceleration	15 m/s <sup>2</sup>
Max. speed	0,5 m/s
Repetition accuracy	±0.015 mm
Duty cycle	100%
Corrosion resistance class (CRC)	0 - No corrosion stress
Noise level	40 dB(A)
Degree of protection	IP40
Ambient temperature	0 °C ... 50 °C
Fixed bearing dynamic basic load rating	3795 N
Linear guide dynamic basic load rating	2135 N
Dynamic basic load rating, ball screw drive	2000 N
Max. force F <sub>y</sub>	991 N
Max. force F <sub>z</sub>	991 N
Max. torque M <sub>x</sub>	3.4 Nm
Max. torque M <sub>y</sub>	3.17 Nm
Max. torque M <sub>z</sub>	3.17 Nm
Max. radial force on actuator shaft	140 N

Feature	Value
Max. feed force Fx	60 N
Guide value for payload, horizontal	6 kg
Guide value for payload, vertical	6 kg
Ball screw drive statistical basic load rating	3700 N
Linear guide statistical basic load rating	3880 N
Mass moment of inertia JH per meter of stroke	0.04477 kgcm <sup>2</sup>
Mass moment of inertia JL per kg of payload	0.01621 kgcm <sup>2</sup>
Mass moment of inertia JO	0.00668 kgcm <sup>2</sup>
Feed constant	8 mm/U
Statistical fixed bearing load rating	1792 N
Reference value, running performance	5000 km
Maintenance interval	Life-time lubrication
Moving mass at 0 mm stroke	149 g
Additional weight per 10 mm stroke	30 g
Basic weight with 0 mm stroke	331 g
Product weight	406 g
Additional moving mass per 10 mm stroke	12 g
Type of mounting	With internal thread With centering sleeve With accessories With cylindrical pin
Interface code, actuator	V25
Note on materials	Contains paint-wetting impairment substances RoHS-compliant
Slide carriage material	Roller bearing steel
Guide rail material	Roller bearing steel
Housing material	Wrought aluminum alloy, anodized
Material of yoke plate	Wrought aluminum alloy
Piston rod material	High-alloy stainless steel
Slide material	Wrought aluminum alloy, anodized
Spindle nut material	Roller bearing steel
Spindle material	Roller bearing steel