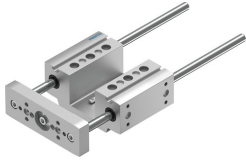


# Guide unit EAGF-P1-KF-25-150

Part number: 3192947

FESTO



## Data sheet

| Feature  | Value                                     |
|--|---|
| Size   | 25  |
| Stroke   | 150 mm                                    |
| Reversing backlash                                 | 0 µm                                      |
| Type code  | EAGF                                      |
| Mounting position                                  | Any                                       |
| Guide  | Recirculating ball bearing guide          |
| Design   | Guide                                     |
| Max. acceleration                                  | 25 m/s <sup>2</sup>                       |
| Max. speed   | 1 m/s                                     |
| Corrosion resistance class (CRC)                   | 1 - Low corrosion stress                  |
| Degree of protection                               | IP40                                      |
| Ambient temperature                                | 0 °C ... 50 °C                            |
| Max. force F <sub>y</sub>                          | 320 N                                     |
| Max. force F <sub>y</sub> static                   | 415 N                                     |
| Max. force F <sub>z</sub>                          | 320 N                                     |
| Max. force F <sub>z</sub> static                   | 415 N                                     |
| Max. torque M <sub>x</sub>                         | 15 Nm                                     |
| Max. static moment M <sub>x</sub>                  | 19 Nm                                     |
| Max. torque M <sub>y</sub>                         | 10 Nm                                     |
| Max. static moment M <sub>y</sub>                  | 12 Nm                                     |
| Max. torque M <sub>z</sub>                         | 10 Nm                                     |
| Max. static moment M <sub>z</sub>                  | 12 Nm                                     |
| Displacement force                                 | 4 N                                       |
| Moving mass at 0 mm stroke                         | 300 g                                     |
| Additional weight per 10 mm stroke                 | 12 g                                      |
| Basic weight with 0 mm stroke                      | 1080 g                                    |
| Additional moving mass per 10 mm stroke            | 12 g                                      |
| Center of gravity of moving mass with 0 mm stroke  | 30 mm                                     |
| Center of gravity of moving mass with 10 mm stroke | 4.5 mm                                    |
| Type of mounting                                   | With internal thread                      |
| Note on materials                                  | Free of copper and PTFE<br>RoHS-compliant |
| Material of guide component                        | Tempered steel<br>Hard-chrome-plated      |
| Housing material                                   | Wrought aluminum alloy<br>Anodized        |

| Feature                | Value                              |
|------------------------|------------------------------------|
| Material of yoke plate | Wrought aluminum alloy<br>Anodized |