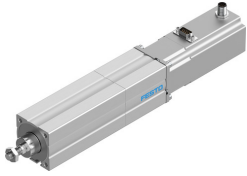


# Electric actuator EPCO-40-50-12.7P-ST-E

Part number: 1472617

FESTO



## Data sheet

Feature	Value
Size	40
Stroke	50 mm
Stroke reserve	0 mm
Piston rod thread	M10x1.25
Reversing backlash	100 µm
Step angle with full step	1.8 deg
Step angle tolerance	±5%
Screw diameter	12.7 mm
Spindle pitch	12.7 mm/U
Max. angle of rotation of the piston rod +/-	1 deg
Type code	EPCO
Mounting position	Any
Piston rod end	External thread
Motor type	Stepper motor
Design	Electric actuator with ball screw drive
Spindle type	Ball screw drive
Protection against torsion/guide	With plain-bearing guide
Rotor position sensor	Incremental encoder
Rotor position sensor interface	RS422 TTL A/B channels + zero index
Rotor position sensor measuring principle	Optical
Max. acceleration	10 m/s <sup>2</sup>
Max. speed	0.46 m/s
Repetition accuracy	±0.02 mm
Duty cycle	100%
Insulation protection class	B
Nominal operating voltage DC	24 V
Motor nominal current	4.2 A
CE marking (see declaration of conformity)	As per EU EMC directive
Corrosion resistance class (CRC)	1 - Low corrosion stress
Storage temperature	-20 °C ... 60 °C
Relative air humidity	0 - 85 % Non-condensing
Degree of protection	IP40
Ambient temperature	0 °C ... 50 °C

Feature	Value
Certification	RCM compliance mark c UL us - Recognized (OL)
Impact energy in the end positions	4.0E-4 J
Max. torque Mx	0 Nm
Max. torque My	3.3 Nm
Max. torque Mz	3.3 Nm
Max. feed force Fx	250 N
Guide value for payload, horizontal	40 kg
Guide value for payload, vertical	20 kg
Mass moment of inertia JH per meter of stroke	0.167 kgcm <sup>2</sup>
Mass moment of inertia JL per kg of payload	0.0409 kgcm <sup>2</sup>
Mass moment of inertia JO	0.3375 kgcm <sup>2</sup>
Moving mass at 0 mm stroke	415 g
Additional weight per 10 mm stroke	55 g
Basic weight with 0 mm stroke	2585 g
Additional moving mass per 10 mm stroke	4.9 g
Electrical connection technology	Plug
Type of mounting	With internal thread With accessories
Note on materials	Contains paint-wetting impairment substances RoHS-compliant
Cover material	Wrought aluminum alloy Smooth anodized
Housing material	Wrought aluminum alloy Smooth anodized
Piston rod material	High-alloy stainless steel
Spindle nut material	Steel
Spindle material	Roller bearing steel
Material of cylinder barrel	Wrought aluminum alloy Smooth anodized