

# CZ7 - MZ7 CZ - MZ and CZA - MZA W-TYPE for aggressive environments

inserts		page:
CD	15 poles + ⊕	68
CDA	10 poles + ⊕	98
CSAH	10 poles + ⊕	99
CDC	10 poles + ⊕	104
MIXO	1 module	264 - 316

The covers for L and LG versions cannot be used together with coding pins. If this application is required, please contact ILME SpA.

## housings and cover

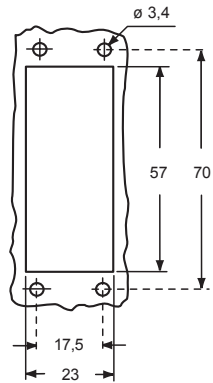


## hoods and cover

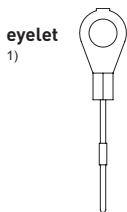


description	part No.		entry Pg		part No.		entry Pg		part No.		entry Pg	
				M		M		M		M		M
bulkhead mounting housing with lever and gasket	<b>CZ7IW 15 L</b>	--										
surface mounting housing, with lever	<b>CZ7PW 15 L2</b>	16 x 2	<b>MZ7PW 15L225</b>	25 x 2								
cover with pegs and gasket (for 1 lever enclosures) <sup>1)</sup>	<b>CZCW 15 L</b>											
enclosure with pegs and gasket, side entry					<b>CZOW 15 L</b>	16			<b>MZOW 15 L20</b>	20		
enclosure with pegs and gasket, side entry									<b>MZOW 15 L25</b>	25		
enclosure with pegs and gasket, side entry, high construction					<b>CZAOW 15 L21</b>	21			<b>MZAOW 15 L25</b>	25		
enclosure with pegs and gasket, top entry					<b>CZVW 15 L</b>	13,5			<b>MZVW 15 L20</b>	20		
enclosure with pegs and gasket, top entry, high construction					<b>CZAVW 15 L21</b>	21			<b>MZAVW 15 L25</b>	25		
cover with lever (for enclosures with pegs) <sup>2)</sup>					<b>CZ7CW 15 LG</b>							

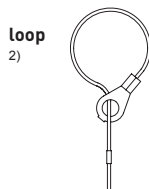
panel cut-out for bulkhead mounting housings



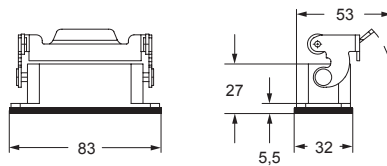
For fixing on housings



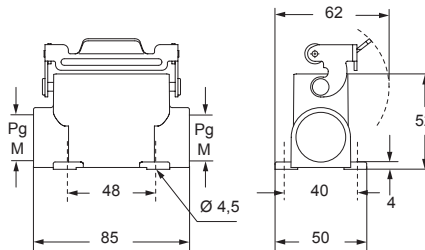
For fixing on hoods



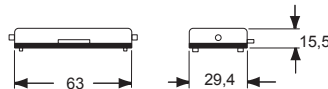
### CZ7IW L



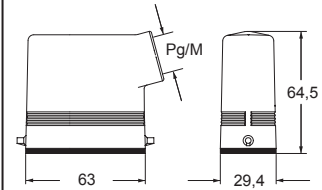
### CZ7PW L and MZ7PW L



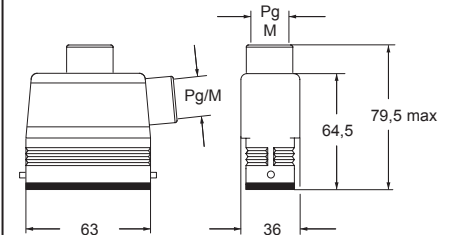
### CZCW L



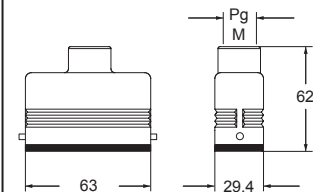
### CZOW L and MZOW L



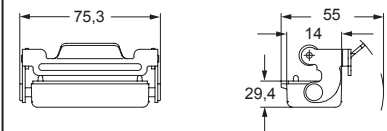
### CZAOW L - MZAOW L and CZAVW L - MZAVW L



### CZVW L and MZVW L



### CZ7CW LG



**CALUS**® Type 4/4X/12

insulating cable gland or fittings without gasket

cable gland with O-Ring gasket