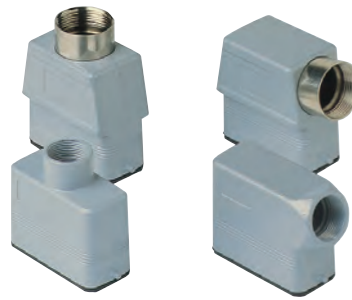


CZ - CZA - CZF and MZ - MZA - MZF IL-BRID standard version

inserts		page:
CD	15 poles + ⊕	68
CDA	10 poles + ⊕	98
CSAH	10 poles + ⊕	99
CDC	10 poles + ⊕	104
MIXO	1 module	264 - 316

hoods with 2 pegs



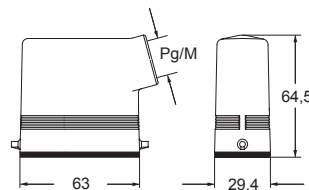
hoods with single lever



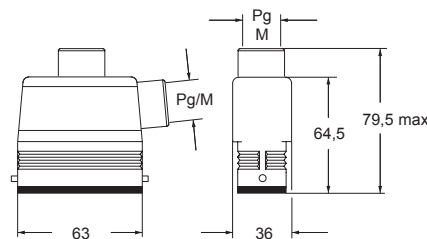
description	part No.		entry		part No.		entry	
			Pg	M			Pg	M
with pegs, side entry	CZO 15 L	16	MZO 15 L20	20				
with pegs, side entry			MZO 15 L25	25				
with pegs, side entry, high construction	CZAO 15 L16	16	MZAO 15 L20	20				
with pegs, side entry, high construction	CZAO 15 L21	21	MZAO 15 L25	25				
with pegs, top entry	CZV 15 L	13,5	MZV 15 L20	20				
with pegs, top entry, high construction	CZAV 15 L16	16	MZAV 15 L20	20				
with pegs, top entry, high construction	CZAV 15 L21	21	MZAV 15 L25	25				
with pegs, side entry, high construction, without adapter ¹⁾	CZFO 15 L16	16	MZFO 15 L20	20				
with pegs, side entry, high construction, without adapter ¹⁾	CZFO 15 L21	21	MZFO 15 L25	25				
with pegs, top entry, high construction, without adapter ¹⁾	CZFV 15 L16	16	MZFV 15 L20	20				
with pegs, top entry, high construction, without adapter ¹⁾	CZFV 15 L21	21	MZFV 15 L25	25				
with single lever, top entry	CZV 15 LG	13,5	MZV 15 LG20	20				

¹⁾ enclosure without adapter, threaded on the body, to be used only with a complete cable gland.

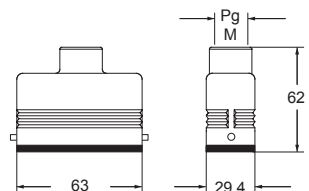
CZO L and MZO L ▲



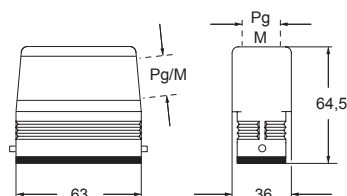
CZAO L - MZAO L and CZAV L - MZAV L ▲



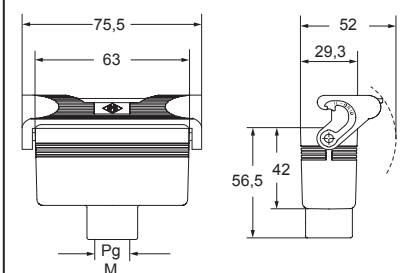
CZV L and MZV L ▲



CZFO L - MZFO L and CZFV L - MZFV L ●



CZV LG and MZV LG ▲



CAUS Type 4/4X/12



▲ insulating cable gland or fittings without gasket



▲ cable gland with O-Ring gasket



● cable gland with O-Ring gasket
IP67 if hoods with fused pegs and without adapters, coupled with IP67 housings