

enclosures:  
size "104.27"

page:

<b>CX 4/8:</b>	
C-TYPE IP65/IP66	412 - 423
C7 IP67, two levers	441 - 442
V-TYPE IP65/IP66, single lever	459 - 463
BIG hoods	472 - 473
T-TYPE IP65 insulating	486 - 487
T-TYPE / W IP66/IP69 insulating	492
HYGIENIC T-TYPE / H IP66/IP69	504
HYGIENIC T-TYPE / C IP66/IP69, -50 °C	509
W-TYPE for aggressive environments	524
E-Xtreme® corrosion proof	536 - 537, 545, 556 - 557
EMC	581
Central lever	612 - 614
LS-TYPE	624 - 625
IP68	644 - 647

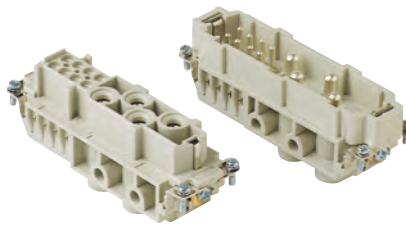
panel supports:  
COB

652 - 653

**CX 4/8 RY:**  
For 180 °C

589

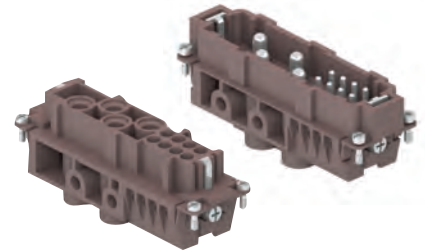
inserts,  
screw terminal connection



**Q SILVER PLATED CONTACTS**

part No.

inserts,  
screw terminal connection



**180 °C**

**Q SILVER PLATED CONTACTS**

part No

description

**CXF 4/8**  
**CXM 4/8**

female inserts with female contacts  
male inserts with male contacts  
use in temperatures up to 180 °C  
female inserts with female contacts  
male inserts with male contacts

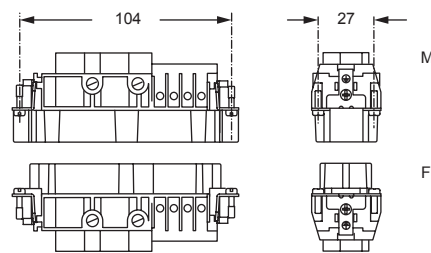
**CXF 4/8 RY**  
**CXM 4/8 RY**

- characteristics according to EN 61984:

- 80A 400V 6kV 3**
- 80A 400/690V 6kV 2**
- 16A 230/400V 4kV 3**
- 16A 400V 4kV 2**

- certified
- rated voltage according to UL/CSA: 600V
- insulation resistance:  $\geq 10$  G $\Omega$
- ambient temperature limit: -40 °C ... +125 °C (CX)
- ambient temperature limit: -40 °C ... +180 °C (CX...RY)
- made of self-extinguishing thermoplastic resin UL 94V-0
- mechanical life:  $\geq 500$  cycles
- contact resistance:
  - $\leq 0,3$  m $\Omega$  (4 poles)
  - $\leq 1$  m $\Omega$  (8 poles)
- for max. current load see the connector inserts derating diagrams below; for more information see page 28

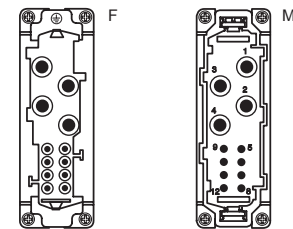
**CX - CX..RY**



**80A contacts**

- without plate for section conductors: 4 - 16 mm<sup>2</sup> - AWG 12 - 6
- conductors stripping length: 14 mm
- terminal screw torque: 2,5 Nm (22.1 lb.in), for more information see page 20 and 21

contacts side (front view)



**16A contacts**

- with plate for section conductors: 0,75 - 2,5 mm<sup>2</sup> - AWG 18 - 14
- conductors stripping length: 7 mm
- terminal screw torque: 0,5 Nm (4.4 lb.in), for more information see page 20 and 21

The derating curves for the connector's **power** (red) and **signal** (black) portions provided in the diagram are valid for the following combinations of cross-sectional area on the power side and on the signal side:

- power 4 mm<sup>2</sup> with signal 1 mm<sup>2</sup>;
- power 6 mm<sup>2</sup> with signal 1 mm<sup>2</sup>;
- power 10 mm<sup>2</sup> or 6 mm<sup>2</sup> with signal 1,5 mm<sup>2</sup>;
- power 16 mm<sup>2</sup> with signal 2,5 mm<sup>2</sup>;

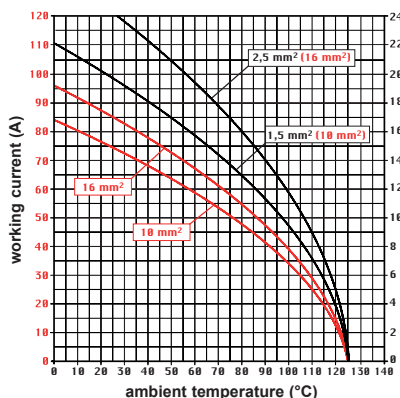
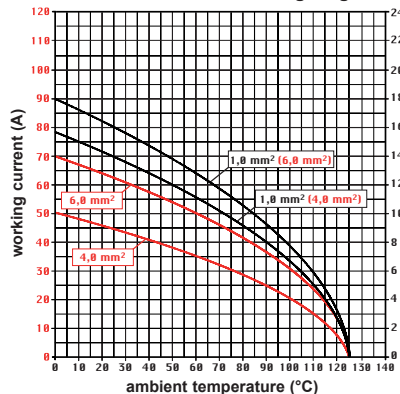
NOTE 1

Any cross-sectional area on the signal side higher than that combined to the relevant cross-sectional area on the power side may be used, but with the derating curve for the cross-sectional area given as combined to that on the power side;

NOTE 2

Any cross-sectional area on the signal side lower than that combined to the relevant cross-sectional area on the power side (e.g. 1 mm<sup>2</sup> signal with 16 mm<sup>2</sup> power) may be used at the current indicated for the signal cross-sectional area belonging to the closest lower cross-sectional area on the power side (i.e. the 1 mm<sup>2</sup> curve combined to the 6 mm<sup>2</sup> power section)

**CX 4/8 poles connector inserts**  
**Maximum current load derating diagrams**



**CX..RY 4/8 poles connector inserts**  
**Maximum current load derating diagram**

