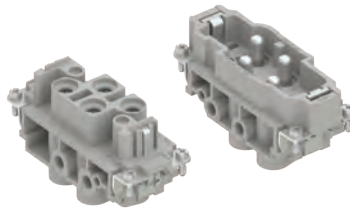


CX 4 poles (80A - 830V) + ⊕

enclosures: size "77.27"	page:
C-TYPE IP65/IP66	402 - 411
C7 IP67, two levers	439 - 440
V-TYPE IP65/IP66, single lever	454 - 458
BIG hoods	470 - 471
T-TYPE IP65 insulating	484 - 485
T-TYPE / W IP66/IP69 insulating	491
HYGIENIC T-TYPE / H IP66/IP69	503
HYGIENIC T-TYPE / C IP66/IP69, -50 °C	508
W-TYPE for aggressive environments	523
E-Xtreme® corrosion proof	534 - 535, 544, 554 - 555
EMC	580
Central lever	609 - 611
LS-TYPE	622 - 623
IP68	640 - 643
panel supports: COB	page: 652 - 653

inserts, screw terminal connection



✓ RATING 830V
Q SILVER PLATED CONTACTS

description

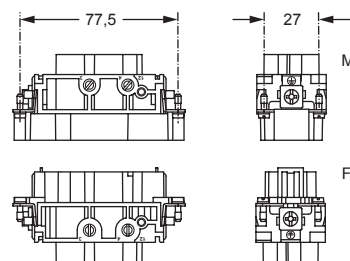
part No.

female inserts with female contacts
male inserts with male contacts

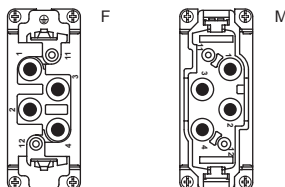
CXF 4/0
CXM 4/0

- characteristics according to EN 61984:

- 80A 830V 8kV 3**
- certified
- rated voltage according to UL/CSA: 600V
- insulation resistance: $\geq 10 \text{ G}\Omega$
- ambient temperature limit: $-40 \text{ }^\circ\text{C} \dots +125 \text{ }^\circ\text{C}$
- made of self-extinguishing thermoplastic resin
UL 94V-0
- mechanical life: ≥ 500 cycles
- contact resistance: $\leq 0,3 \text{ m}\Omega$
- for max. current load see the connector inserts derating diagram below; for more information see page 28



contacts side (front view)



80A contacts

- without plate for section conductors:
4 - 16 mm² - AWG 12 - 6
- conductors stripping length: 14 mm
- terminal screw torque: 2,5 Nm (22.1 lb.in),
for more information see page 20 and 21

CX 4/0 poles connector inserts
Maximum current load derating diagram

