

# CX 3/4 XDF/XDM 3 poles (40A - 830V) + 4 poles (10A - 830V)

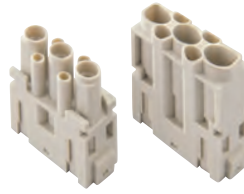
The modular inserts must be installed in suitable frames which are then mounted in traditional enclosures or in COB panel support. Single-sized modular units may be directly mounted inside MIXO ONE enclosures.

page:

frames for modular units 316 - 317  
MIXO ONE enclosures 369

- male and female contacts finger proof
- their key characteristic lies in the fact that they guarantee maximum safety even in case of accidental contact with fingers (IP2X or IPXXB). Safety is guaranteed as standard on female contacts, but also on male contacts. This feature is important as it ensures full compliance with the recent safety standard EN 60204-1, concerning electric equipment fitted on machines and in particular with the requirements of Article 6.2.4 concerning protection against residual voltage. In the case of plugs or similar devices, the with drawal of which results in the exposure of conductors (for example pins), the discharge time shall not exceed 1 s, otherwise such conductors shall be protected against direct contact to at least an IP2X or IPXXB.

modular units, crimp connections



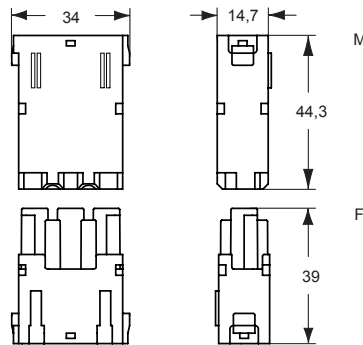
40A and 10A crimp contacts silver and gold plated



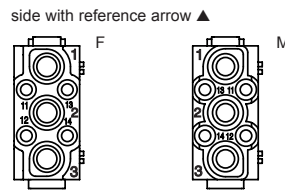
description	part No.	part No.
without contacts (to be ordered separately)		
female inserts for female contacts	<b>CX 3/4 XDF</b>	
male inserts for male contacts	<b>CX 3/4 XDM</b>	
40A female crimp contacts		<b>CXFA 1.5</b> <b>CXFA 2.5</b> <b>CXFA 4.0</b> <b>CXFA 6.0</b>
1,5 mm <sup>2</sup> AWG 16		<b>silver plated</b>
2,5 mm <sup>2</sup> AWG 14		
4 mm <sup>2</sup> AWG 12		
6 mm <sup>2</sup> AWG 10		
40A male crimp contacts		<b>CXMA 1.5</b> <b>CXMA 2.5</b> <b>CXMA 4.0</b> <b>CXMA 6.0</b>
1,5 mm <sup>2</sup> AWG 16		<b>gold plated+</b>
2,5 mm <sup>2</sup> AWG 14		
4 mm <sup>2</sup> AWG 12		
6 mm <sup>2</sup> AWG 10		
10A female crimp contacts		<b>CDFA 0.3</b> <b>CDFA 0.5</b> <b>CDFA 0.7</b> <b>CDFA 1.0</b> <b>CDFA 1.5</b> <b>CDFA 2.5</b>
0,14-0,37 mm <sup>2</sup> AWG 26-22 identification No. 1		<b>gold plated+</b>
0,5 mm <sup>2</sup> AWG 20 identification No. 2		
0,75 mm <sup>2</sup> AWG 18 identification No. ②		
1 mm <sup>2</sup> AWG 18 identification No. 3		
1,5 mm <sup>2</sup> AWG 16 identification No. 4		
2,5 mm <sup>2</sup> AWG 14 identification No. 5		
10A male crimp contacts		<b>CDMA 0.3</b> <b>CDMA 0.5</b> <b>CDMA 0.7</b> <b>CDMA 1.0</b> <b>CDMA 1.5</b> <b>CDMA 2.5</b>
0,14-0,37 mm <sup>2</sup> AWG 26-22 identification No. 1		<b>gold plated+</b>
0,5 mm <sup>2</sup> AWG 20 identification No. 2		
0,75 mm <sup>2</sup> AWG 18 identification No. ②		
1 mm <sup>2</sup> AWG 18 identification No. 3		
1,5 mm <sup>2</sup> AWG 16 identification No. 4		
2,5 mm <sup>2</sup> AWG 14 identification No. 5		

+ for basic or high thickness gold plating, please refer to page 674

- characteristics according to EN 61984:
- 3 poles 40A 830V 8kV 3**
- 4 poles 10A 830V 8kV 3**
- cULus (UL for USA and Canada),
- certified
- rated voltage according to UL/CSA: 600V
- insulation resistance: ≥ 10 GΩ
- ambient temperature limit: -40 °C ... +125 °C
- made of self-extinguishing thermoplastic resin UL 94V-0
- mechanical life: ≥ 500 cycles
- contact resistance: ≤ 0,3 mΩ (3 poles), ≤ 3 mΩ (4 poles)
- for max. current load see the connector inserts derating diagram below; for more information see page 28

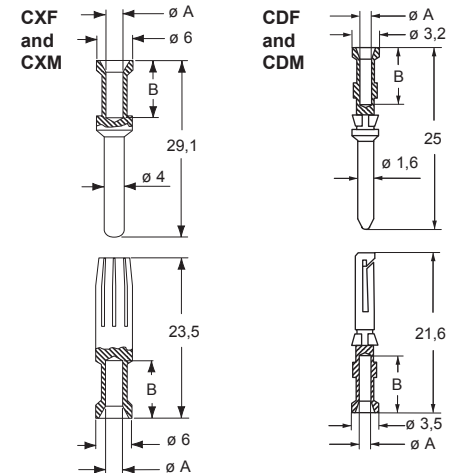


contacts side (front view)



- 1 frame slot

- it is recommended to crimp the contacts with crimping tools homologated by ILME (please see the crimping tool section 40A contacts, CXF, CXM series and 10A contacts CDF, CDM series) on pages 708 - 741



CXF and CXM contacts		
conductor section (mm <sup>2</sup> )	conductor slot ø A (mm)	conductors stripping length B (mm)
1,5	1,8	9
2,5	2,2	9
4	2,85	9,6
6	3,5	9,6

CDF and CDM contacts		
conductor section (mm <sup>2</sup> )	conductor slot ø A (mm)	conductors stripping length B (mm)
0,14-0,37	0,9	8
0,5	1,1	8
0,75	1,3	8
1,0	1,45	8
1,5	1,8	8
2,5	2,2	6

CX 3/4 XD, 3/4 poles connector inserts Maximum current load derating diagram

