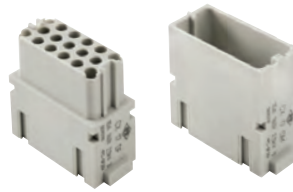


# CX 17 DF/DM 17 poles 10A - 160V

The modular inserts must be installed in suitable frames which are then mounted in traditional enclosures or in COB panel support.  
Single-sized modular units may be directly mounted inside MIXO ONE enclosures.

frames for modular units page: 316 - 317  
MIXO ONE enclosures 369

modular units,  
crimp connections



10A crimp contacts,  
silver and gold plated



description	part No.	part No.
without contacts (to be ordered separately)		
female inserts for female contacts	<b>CX 17 DF</b>	
male inserts for male contacts	<b>CX 17 DM</b>	
10A female crimp contacts		
0,14-0,37 mm <sup>2</sup> AWG 26-22 identification No. 1		<b>CDFA 0.3</b>
0,5 mm <sup>2</sup> AWG 20 identification No. 2		<b>CDFA 0.5</b>
0,75 mm <sup>2</sup> AWG 18 identification No. ②		<b>CDFA 0.7</b>
1 mm <sup>2</sup> AWG 18 identification No. 3		<b>CDFA 1.0</b>
1,5 mm <sup>2</sup> AWG 16 identification No. 4		<b>CDFA 1.5</b>
2,5 mm <sup>2</sup> AWG 14 identification No. 5		<b>CDFA 2.5</b>
		<b>silver plated</b>
		<b>CDFD 0.3</b>
		<b>CDFD 0.5</b>
		<b>CDFD 0.7</b>
		<b>CDFD 1.0</b>
		<b>CDFD 1.5</b>
		<b>CDFD 2.5</b>
		<b>gold plated+</b>
10A male crimp contacts		
0,14-0,37 mm <sup>2</sup> AWG 26-22 identification No. 1		<b>CDMA 0.3</b>
0,5 mm <sup>2</sup> AWG 20 identification No. 2		<b>CDMA 0.5</b>
0,75 mm <sup>2</sup> AWG 18 identification No. ②		<b>CDMA 0.7</b>
1 mm <sup>2</sup> AWG 18 identification No. 3		<b>CDMA 1.0</b>
1,5 mm <sup>2</sup> AWG 16 identification No. 4		<b>CDMA 1.5</b>
2,5 mm <sup>2</sup> AWG 14 identification No. 5		<b>CDMA 2.5</b>

MIXO INSERTS

- characteristics according to EN 61984:

**10A 160V 2,5kV 3**  
**10A 250V 4kV 2**

- cULus (UL for USA and Canada),

- certified

- rated voltage according to UL/CSA: 250V

- insulation resistance:  $\geq 10 \text{ G}\Omega$

- ambient temperature limit: -40 °C ... +125 °C

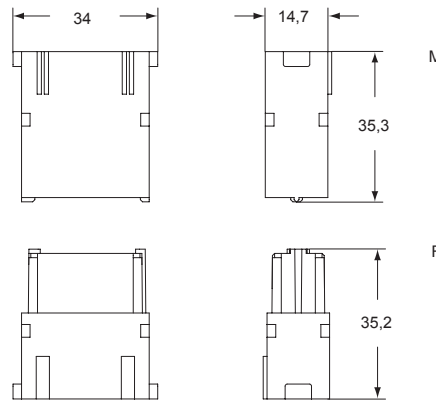
- made of self-extinguishing thermoplastic resin  
UL 94V-0

- mechanical life:  $\geq 500$  cycles

- contact resistance:  $\leq 3 \text{ m}\Omega$

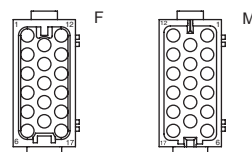
- **it is recommended to crimp the contacts with crimping tools homologated by ILME** (please see the crimping tool section 10A contacts, CDF and CDM series) on pages 708 - 741

- for max. current load see the connector inserts derating diagram below; for more information see page 28

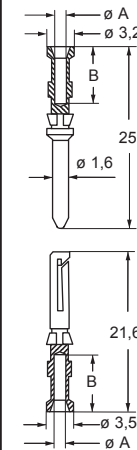


contacts side (front view)

side with reference arrow ▲



- 1 frame slot



**CDF and CDM contacts**

conductor section (mm <sup>2</sup> )	conductor slot $\phi A$ (mm)	conductors stripping length B (mm)
0,14-0,37	0,9	8
0,5	1,1	8
0,75	1,3	8
1,0	1,45	8
1,5	1,8	8
2,5	2,2	6

+ for basic or high thickness gold plating, please refer to page 674

**CX 17 D, 17 poles connector inserts**  
**Maximum current load derating diagram**

