

CX 03 4BF/4BM 3 poles 40A - 500V

The modular inserts must be installed in suitable frames which are then mounted in traditional enclosures* or in COB panel support.

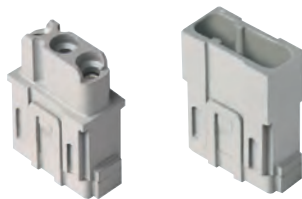
Single-sized modular units may be directly mounted inside MIXO ONE enclosures.

frames for modular units* page: 316 - 317

MIXO ONE enclosures 369

* enclosures: bulkhead mounting housings, high construction housings or high construction hoods

modular units, crimp connections



40A silver plated crimp contacts



description

part No.

part No.

without contacts (to be ordered separately)
female inserts for female contacts 1)
male inserts for male contacts 1)

CX 03 4BF
CX 03 4BM

40A female crimp contacts

1,5 mm ²	AWG 16
2,5 mm ²	AWG 14
4 mm ²	AWG 12
6 mm ²	AWG 10
10 mm ²	AWG 8

40A male crimp contacts

1,5 mm ²	AWG 16
2,5 mm ²	AWG 14
4 mm ²	AWG 12
6 mm ²	AWG 10
10 mm ²	AWG 8

CXFA 1.5
CXFA 2.5
CXFA 4.0
CXFA 6.0
CXFA 10

silver plated

CXMA 1.5
CXMA 2.5
CXMA 4.0
CXMA 6.0
CXMA 10

1) cable diameter up to 7,5 mm
contact size up to 10 mm²

- characteristics according to EN 61984:

40A 500V 6kV 3

- cULus (UL for USA and Canada),

- certified

- rated voltage according to UL/CSA: 600V

- insulation resistance: $\geq 10 \text{ G}\Omega$

- ambient temperature limit: -40 °C ... +125 °C

- made of self-extinguishing thermoplastic resin
UL 94V-0

- mechanical life: ≥ 500 cycles

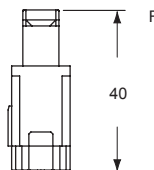
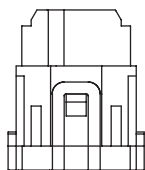
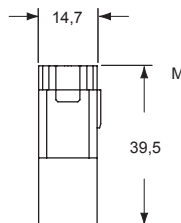
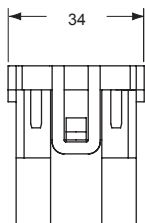
- contact resistance: $\leq 0,3 \text{ m}\Omega$

- can be mated with CX 02 A/B modules

- **it is recommended to crimp the contacts**
(1,5 - 10 mm²), **with crimping tools homologated**
by ILME (please see the crimping tool section 40A

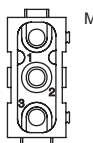
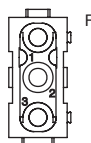
contacts, CXF and CXM series) on pages 708 - 741

- for max. current load see the connector inserts derating diagram below; for more information see page 28

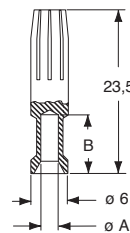
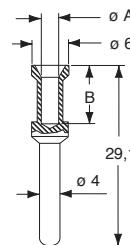


contacts side (front view)

side with reference arrow ▲



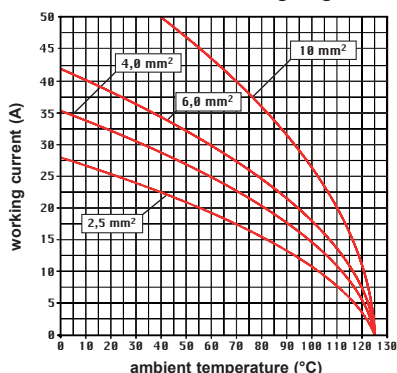
- 1 frame slot



CXF and CXM contacts

conductor section (mm ²)	conductor slot ø A (mm)	conductor stripping length B (mm)
1,5	1,8	9
2,5	2,2	9
4	2,85	9,6
6	3,5	9,6
10	4,3	15

CX 03 4B, 3 poles connector inserts
Maximum current load derating diagram



MIXO INSERTS