




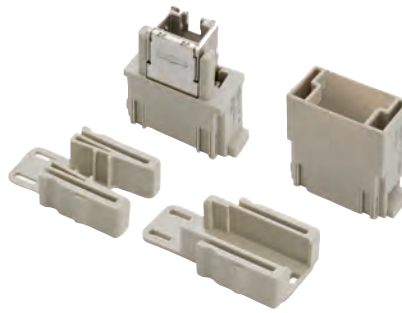
The modular inserts must be installed in suitable frames, which are then mounted in traditional enclosures or in COB panel supports.

frames for modular units page:  
316 - 317

MIXO ONE enclosures 369

- characteristics according to EN 61984:
- 1A 50V 0,8kV 3**
- certified by  (UL for USA and Canada),  
- ENEC certified
- rated voltage according to UL/CSA: 50V
- insulation resistance: ≥ 10 GΩ
- made of self-extinguishing thermoplastic resin UL 94V-0
- mechanical life: ≥ 500 cycles
- contact resistance: ≥ 3 mΩ
- temperature range: from -40 °C to +70 °C
- we recommend to fix the cable with cable tie
- for contact crimping instructions, please see the crimping tool section on page 736 and 737

housing for RJ45 male connectors,  
RJ45 female connectors



crimp and IDC termination,  
RJ45 male connectors



description	part No.	part No.
- female insert with 1 RJ45 female connector	<b>CX 01 J8F</b>	
- male insert for 1 RJ45 male crimp connector, (without RJ45 connector, to be ordered separately) or connecting cables	<b>CX 01 J8M</b>	
- male insert for 1 RJ45 male IDC connector, 8 data contacts (without RJ45 connector, to be ordered separately) <sup>1)</sup>	<b>CX 01 J8IM</b>	
RJ45 male crimp connector, 8 data contacts		<b>CX 8 J6M</b>
RJ45 male IDC connector, 8 data contacts		<b>CX 8 J6IM</b>

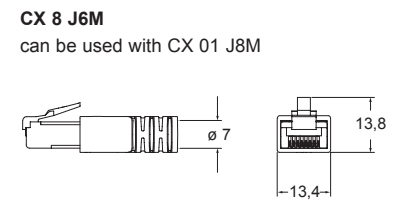
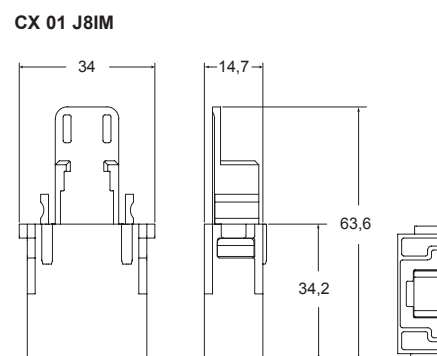
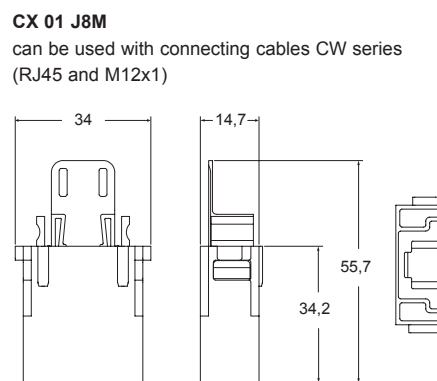
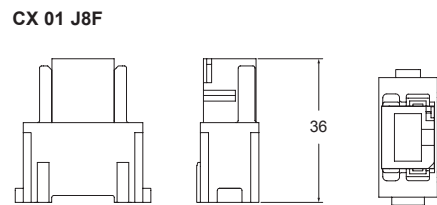
- CX 01 J8F technical data:**
- RJ45 female insert, Cat. 6 Class E<sub>A</sub>
  - shielding housing: zinc diecast
  - housing finish: nickel-plated
  - current carrying capacity at 50 °C: 1A
  - adequate for Power over Ethernet:  
PoE according to IEEE 802.3af
  - connectors: IEC 60603-7-5
  - adequate for 10 Gigabit Ethernet:  
10 Gigabit Ethernet acc. to IEEE 802.3an
  - custom-designed cabling systems:  
PROFINET Installation Guideline
  - generic cabling systems:  
ANSI/TIA/EIA-568-C.2  
ISO/IEC 11801  
EN 50173-1  
ISO/IEC 24702  
EN 61918
  - Class E<sub>A</sub> (channel): ISO/IEC 11801, EN 50173-1

- CX 8 J6M technical data:**
- RJ45 male crimp connectors Cat. 6<sub>A</sub>
  - crimp pliers: **CJPZ T**
  - screened cable stripper: **CJST**
  - current carrying capacity at 50 °C: 1A
  - Cu-conductor diameter  
solid: 0,40 - 0,51 mm (AWG 26/1 - 24/1)  
stranded: 0,46 - 0,61 mm (AWG 27/7 - 24/7)
  - insulation diameter: 0,85 - 1,05 mm
  - cable diameter: 5,0 - 6,6 mm
  - connectors: IEC 60603-7-51
  - 10 Gigabit Ethernet acc. to IEEE 802.3an:  
adequate for 10 Gigabit Ethernet
  - category 6<sub>A</sub>: ISO/IEC 11801; EN 50173-1
  - Class E<sub>A</sub>: ISO/IEC 11801; EN 50173-1
  - Category 6<sub>A</sub>: ANSI/TIA/EIA-568-C.2

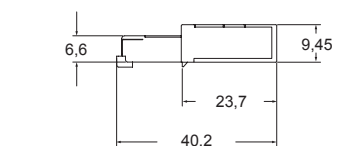
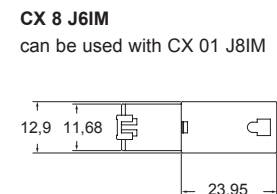
- CX 8 J6IM technical data:**
- RJ45 male IDC connectors Cat. 6 Class E<sub>A</sub>
  - Cu-conductor diameter  
solid: 0,41 - 0,64 mm (AWG 26/1 - 22/1)  
stranded: 0,48 - 0,76 mm (AWG 26/7 - 22/7)
  - insulation diameter: 0,85 - 1,6 mm
  - current carrying capacity at 50 °C: 1A
  - cable diameter: 5,5 - 7,3 mm
  - connectors: IEC 60603-7-5
  - category 6<sub>A</sub>: ISO/IEC 11801; DIN EN 50173-1
  - wrenches pliers for CX 8 J6IM: **CJPW K**
  - 10 Gigabit Ethernet acc. to IEEE 802.3an:  
adequate for 10 Gigabit Ethernet
  - Class E<sub>A</sub>: ISO/IEC 11801; EN 50173-1
  - Category 6: ANSI/TIA/EIA-568-C.2
  - custom-designed cabling systems:  
according to PROFINET Installation Guideline

**WARNING:**  
inserts can be used on high enclosures or bulkhead housings only.

<sup>1)</sup> CX 01 J8IM: to be used with high enclosures (T-TYPE hood M32 / M40 only and CZAV/MZAV top entry hood only), bulkhead housings or COB ... BC/TCQ/TSF/ TSFS only.



for free cable end X-coded DTW X...W (M12x1)



for free cable end X-coded DTW...W (M12x1)