

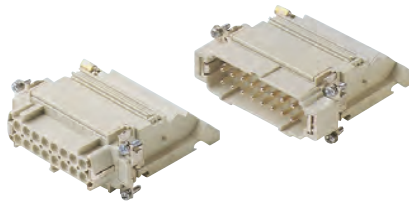
**CT 16 poles + ⊕ 16A - 400V CTSE 16 poles + ⊕ 16A - 500V**

enclosures *): size "77.27"	page:
C-TYPE IP65/IP66	402
C7 IP67, two levers	439 - 440
V-TYPE IP65/IP66, single lever	454 - 455
BIG hoods	470 - 471
T-TYPE IP65 insulating	484 - 485
T-TYPE / W IP66/IP69 insulating	491
HYGIENIC T-TYPE / H IP66/IP69	503
HYGIENIC T-TYPE / C IP66/IP69, -50 °C	508
W-TYPE for aggressive environments	523
E-Xtreme® corrosion proof	534, 544
EMC	580
Central lever	609
LS-TYPE	622

\*) only bulkhead mounted housings and BIG hoods

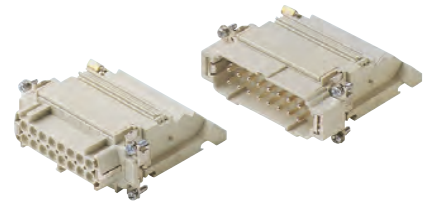
- can be mated with CNE, CCE, CSS, CSH inserts
- inserts may be fitted from front of enclosure

**terminal block inserts  
screw terminal connection**



**Q SILVER PLATED CONTACTS**

**terminal block inserts  
spring terminal connection**



**Q SILVER PLATED CONTACTS**

description	part No.	part No.	part No.	part No.
mounting side (see page 159)	left	right	left	right
female inserts with female contacts <sup>1)</sup>	<b>CTF 16 L</b>	<b>CTF 16 R</b>	<b>CTSEF 16 L</b>	<b>CTSEF 16 R</b>
male inserts with male contacts <sup>1)</sup>	<b>CTM 16 L</b>	<b>CTM 16 R</b>	<b>CTSEM 16 L</b>	<b>CTSEM 16 R</b>
mounting side (see page 159)				
female inserts with female contacts				
male inserts with male contacts				

1) for non-prepared conductors

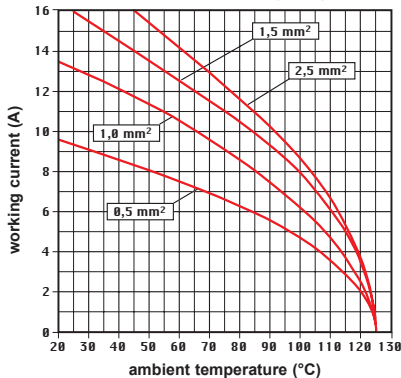
- characteristics according to EN 61984:
- 16A 230/400V 4kV 3 (CT)**
- 16A 400V 4kV 2 (CT)**
- 16A 500V 6kV 3 (CTSE)**
- 16A 400/690V 6kV 2 (CTSE)**

- certified (CT)

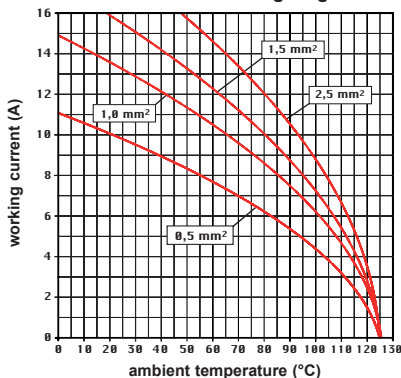
- certified (CTSE)

- rated voltage according to UL/CSA: 600V
- insulation resistance: ≥ 10 GΩ
- ambient temperature limit: -40 °C ... +125 °C
- made of self-extinguishing thermoplastic resin UL 94V-0
- mechanical life: ≥ 500 cycles
- contact resistance: ≤ 4 mΩ
- for max. current load see the connector inserts derating diagrams below; for more information see page 28

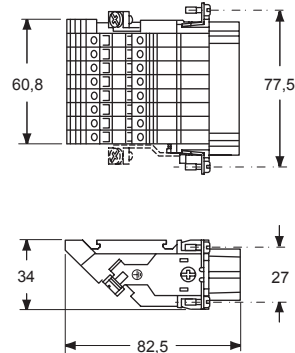
**CT 16 poles connector inserts  
Maximum current load derating diagram**



**CTSE 16 poles connector inserts  
Maximum current load derating diagram**

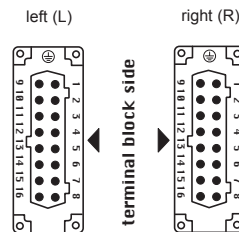


**female inserts (CTF and CTSEF)**



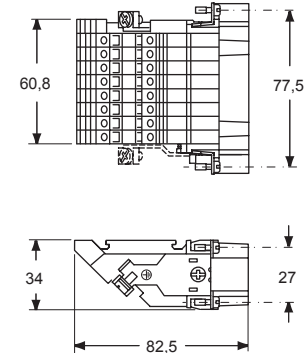
contacts side (front view)

**female inserts (CTF and CTSEF)**

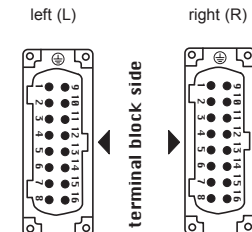


- CT inserts with plate, for section conductors: 0,75 - 2,5 mm² - AWG 18 - 14
- conductors stripping length: 12 mm
- terminal screw torque: 0,4 Nm (3,54 lb.in), for more information see page 20 and 21

**male inserts (CTM and CTSEM)**



**male inserts (CTM and CTSEM)**



- CTSE spring inserts for section conductors: 0,14 - 2,5 mm² - AWG 26 - 14
- conductors stripping length: 9...11 mm

**Connection technology with spring terminal**

