

CR..AD - CR..AD1 - CR..AD2 plates

enclosures

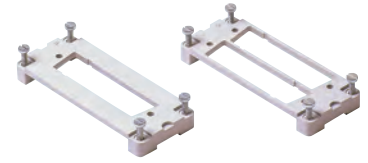
- size "49.16" from page 374
- size "66.16" from page 378
- size "44.27" from page 387
- size "57.27" from page 393
- size "77.27" from page 402

Use M3 passing screws tightened with nut and washer (not included).
Verify connection continuity of coupled connectors

**adapter plates for D-Sub inserts
(IEC 60807-2) CZ / MZ / MZF enclosures**



**adapter plates for D-Sub inserts
(IEC 60807-2) CH / CA and MH / MA / MF enclosures**



description	part No.	for enclosures size	part No.	for enclosures size
for 1 D-Sub insert 9 poles (not included)	CR 09 AD	"49.16"	CR 09 AD1	"44.27"
for 1 D-Sub insert 15 poles (not included)	CR 15 AD	"49.16"	CR 15 AD1	"44.27"
for 1 D-Sub insert 25 poles (not included)	CR 25 AD	"49.16"	CR 25 AD1	"57.27"
for 1 D-Sub insert 37 poles (not included)	CR 37 AD	"66.16"	CR 37 AD1	"77.27"
for 1 D-Sub insert 50 poles (not included)	CR 50 AD	"66.16"	CR 50 AD1	"77.27"
for 2 D-Sub inserts 9 poles (not included)			CR 09 AD2	"44.27"
for 2 D-Sub inserts 15 poles (not included)			CR 15 AD2	"44.27"
for 2 D-Sub inserts 25 poles (not included)			CR 25 AD2	"57.27"
for 2 D-Sub inserts 37 poles (not included)			CR 37 AD2	"77.27"
for 2 D-Sub inserts 50 poles (not included)			CR 50 AD2	"77.27"

Plates CR...AD, CR...AD1 and CR...AD2

For machinery or command equipment that need connection with programming and control electronic devices. The plate housings have notches for the rear insertion of cabled D-Sub inserts.

CR...AD

mounting on bulkhead housings and hoods
one-way mounting in bulkhead housings or hoods.

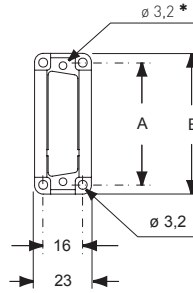
CR...AD1 and CR...AD2
mounting on bulkhead housings (Figure 1)

The D-Sub connector must be mounted on the side marked with the letter "A"

Mounting on hoods (Figure 2)

The D-Sub connector must be mounted on the side marked with the letter "T"

CR...AD



* For pass-through screws type M3

The electrical continuity is guaranteed only if mounted in our enclosures.

part No.	A	B
CR 09 AD	49,5	56,5
CR 15 AD	49,5	56,5
CR 25 AD	49,5	56,5
CR 37 AD	66	73,5
CR 50 AD	66	73,5

CR...AD1

Figure 1

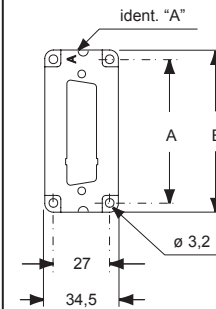
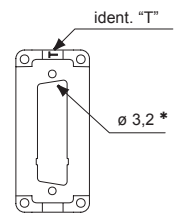


Figure 2



* For pass-through screws type M3

CR...AD2

Figure 1

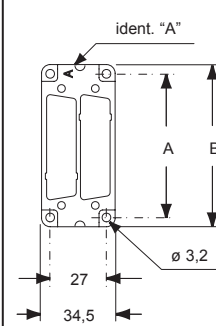
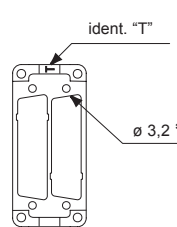


Figure 2



* For pass-through screws type M3

part No.	A	B
CR 09 AD1 / 2	44	51,5
CR 15 AD1 / 2	44	51,5
CR 25 AD1 / 2	57	64,5
CR 37 AD1 / 2	77,5	85
CR 50 AD1 / 2	77,5	85

