

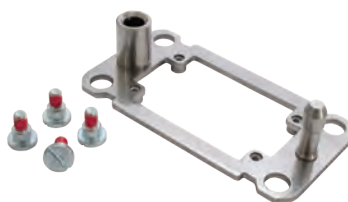
# CR...DF self-centring floating frame HNM (High Number of Matings)

**Q CAUTION:** As the frames are floating, the **PE earthing connection of the metal surfaces on which they are mounted** (mounting bases) **must be performed separately** and cannot be done by connecting the PE earthing contact to the corresponding connector inserts.

**NOTE:** The supply includes 1 frame and 4 shoulder screws with cylindrical head and notch to fix the frame in place.

For use with MIXO inserts CX 04 X, please contact ILME S.p.A.

## self-centring floating frame



## Q 10.000 MATINGS WITH HNM INSERTS

description	part No.
-------------	----------

in stainless steel, to be mounted on:  
 inserts size "44.27"<sup>1)</sup> and MIXO frames for 2 inserts  
 inserts size "57.27"<sup>1)</sup> and MIXO frames for 3 inserts  
 inserts size "77.27"<sup>1)</sup> and MIXO frames for 4 inserts  
 inserts size "104.27"<sup>1)</sup> and MIXO frames for 6 inserts

**CR 06 DF**  
**CR 10 DF**  
**CR 16 DF**  
**CR 24 DF**

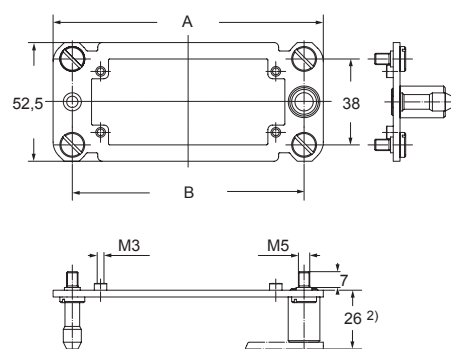
<sup>1)</sup> Except CT, CTS and CTSE

### Technical specifications

- materials:
  - floating frame, inserts: stainless steel
  - fixing screws: zinc-plated steel
- mechanical endurance: up to 10.000 cycles with HNM inserts
- compensation range:
  - x axis: ± 1,5 mm
  - y axis: ± 1,5 mm

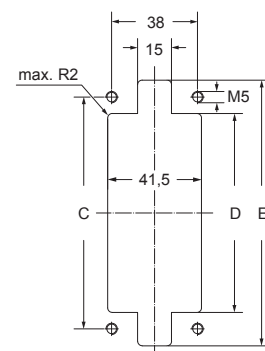
### Characteristics

- Suitable, depending on size, for all standard and MIXO connector inserts and frames, except series CT, CTS and CTSE.
- Designed to be used in the transportation, printing and power electronic industries (for example boxes for rack cabinets) and in all industrial applications that require, during assembly or maintenance, the connection of connectors without possibility of controlling the alignment.
- Enables the **self-centring coupling of two corresponding** connectors without the use of enclosures; they freely move on their base plate (± 1,5 mm on both axes) ensuring the **alignment of the coupling**.



<sup>2)</sup> distance for electric and fibre optic contacts: max 27 mm;  
 distance for pneumatic contacts: max 26,5 mm.

### panel cut-out



part No.	A	B	C	D	E
<b>CR 06 DF</b>	86	69	69	54,5	84
<b>CR 10 DF</b>	99	82	82	67,5	97
<b>CR 16 DF</b>	119,5	102,5	102,5	88	117,5
<b>CR 24 DF</b>	146	129	129	114,5	144

