

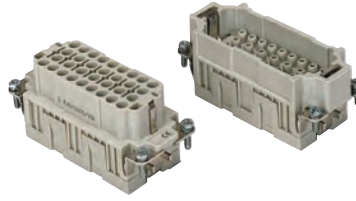
# CQE 32 poles + ⊕ 16A - 500V

enclosures: size "77.27"	page:
C-TYPE IP65/IP66	402 - 411
C7 IP67, two levers	439 - 440
V-TYPE IP65/IP66, single lever	454 - 458
BIG hoods	470 - 471
T-TYPE IP65 insulating	484 - 485
T-TYPE / W IP66/IP69 insulating	491
HYGIENIC T-TYPE / H IP66/IP69	503
HYGIENIC T-TYPE / C IP66/IP69, -50 °C	508
W-TYPE for aggressive environments	523
E-Xtreme® corrosion proof	534 - 535, 544, 554 - 555
EMC	580
Central lever	609 - 611
LS-TYPE	622 - 623
IP68	640 - 643

panel supports:	page:
COB	652 - 653

- for applications requiring higher voltages, please see the special voltage application section on page 167

## inserts, crimp connections



## 16A crimp contacts standard or for advanced opening silver and gold plated



STANDARD



ADVANCED OPENING

description	part No.	part No.
without contacts (to be ordered separately)		
female inserts for female contacts	<b>CQEF 32</b>	
male inserts for male contacts	<b>CQEM 32</b>	
16A female contacts		
0,14-0,37 mm <sup>2</sup> AWG 26-22 one groove	<b>CCFA 0.3</b>	<b>CCFD 0.3</b>
0,5 mm <sup>2</sup> AWG 20 with no grooves	<b>CCFA 0.5</b>	<b>CCFD 0.5</b>
0,75 mm <sup>2</sup> AWG 18 one groove (back side)	<b>CCFA 0.7</b>	<b>CCFD 0.7</b>
1 mm <sup>2</sup> AWG 18 one groove	<b>CCFA 1.0</b>	<b>CCFD 1.0</b>
1,5 mm <sup>2</sup> AWG 16 two grooves	<b>CCFA 1.5</b>	<b>CCFD 1.5</b>
2,5 mm <sup>2</sup> AWG 14 three grooves	<b>CCFA 2.5</b>	<b>CCFD 2.5</b>
3 mm <sup>2</sup> AWG 12 one wide groove	<b>CCFA 3.0</b>	<b>CCFD 3.0</b>
4 mm <sup>2</sup> AWG 12 with no grooves	<b>CCFA 4.0</b>	<b>CCFD 4.0</b>
16A male contacts		
0,14-0,37 mm <sup>2</sup> AWG 26-22 one groove	<b>CCMA 0.3</b>	<b>CCMD 0.3</b>
0,5 mm <sup>2</sup> AWG 20 with no grooves	<b>CCMA 0.5</b>	<b>CCMD 0.5</b>
0,75 mm <sup>2</sup> AWG 18 one groove (back side)	<b>CCMA 0.7</b>	<b>CCMD 0.7</b>
1 mm <sup>2</sup> AWG 18 one groove	<b>CCMA 1.0</b>	<b>CCMD 1.0</b>
1,5 mm <sup>2</sup> AWG 16t wo grooves	<b>CCMA 1.5</b>	<b>CCMD 1.5</b>
2,5 mm <sup>2</sup> AWG 14 three grooves	<b>CCMA 2.5</b>	<b>CCMD 2.5</b>
3 mm <sup>2</sup> AWG 12 one wide groove	<b>CCMA 3.0</b>	<b>CCMD 3.0</b>
4 mm <sup>2</sup> AWG 12 with no grooves	<b>CCMA 4.0</b>	<b>CCMD 4.0</b>
16A male crimp contacts for advanced opening		
0,5 mm <sup>2</sup> AWG 20 with no grooves	<b>CC 0.5 AN</b>	* for basic or high thickness gold plating, please refer to page 675
0,75 mm <sup>2</sup> AWG 18 one groove (back side)	<b>CC 0.7 AN</b>	
1 mm <sup>2</sup> AWG 18 one groove	<b>CC 1.0 AN</b>	
1,5 mm <sup>2</sup> AWG 16 two grooves	<b>CC 1.5 AN</b>	
2,5 mm <sup>2</sup> AWG 14 three grooves	<b>CC 2.5 AN</b>	

- characteristics according to EN 61984:

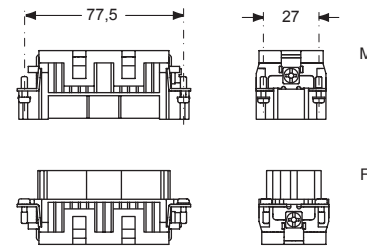
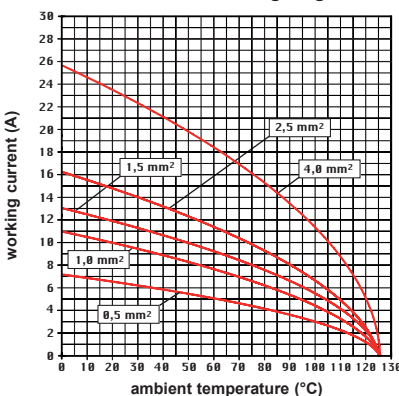
**16A 500V 6kV 3**  
**16A 830V 8kV 2**

- cULus (UL for USA and Canada),

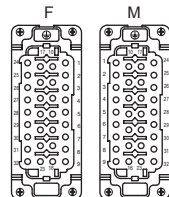
certified

- rated voltage according to UL/CSA: 600V
- insulation resistance: ≥ 10 GΩ
- ambient temperature limit: -40 °C ... +125 °C
- made of self-extinguishing thermoplastic resin UL 94V-0
- mechanical life: ≥ 500 cycles
- contact resistance: ≤ 1 mΩ
- for max. current load see the connector inserts derating diagram below; for more information see page 28

**CQE 32 poles connector inserts**  
**Maximum current load derating diagram**



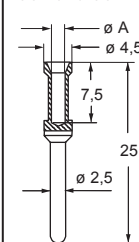
contacts side (front view)



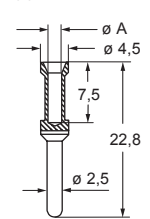
CR CPQ coding pins (page 689)



### CCF and CCM



### CC...AN



- it is recommended to crimp the contacts with crimping tools homologated by ILME (please see the crimping tool section 16A contacts, CCF, CCM and CC...AN series on pages 708 - 741)

### CCF, CCM and CC...AN contacts

conductor section mm <sup>2</sup>	conductor slot ø A (mm)	conductors stripping length (mm)
0,14-0,37	0,9	7,5
0,5	1,1	7,5
0,75	1,3	7,5
1,0	1,45	7,5
1,5	1,8	7,5
2,5	2,2	7,5
3	2,55	7,5
4	2,85	7,5