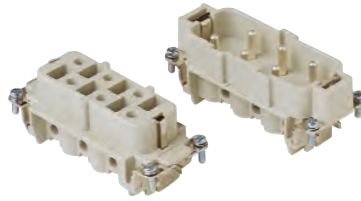


# CP - CP...RY 6 poles + ⊕ 35A - 400/690V

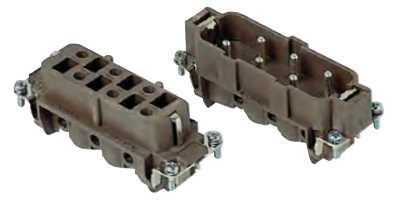
enclosures: size "77.27"	page:
C-TYPE IP65/IP66	402 - 411
C7 IP67, two levers	439 - 440
V-TYPE IP65/IP66, single lever	454 - 458
BIG hoods	470 - 471
T-TYPE IP65 insulating	484 - 485
T-TYPE / W IP66/IP69 insulating	491
HYGIENIC T-TYPE / H IP66/IP69	503
HYGIENIC T-TYPE / C IP66/IP69, -50 °C	508
W-TYPE for aggressive environments	523
E-Xtreme® corrosion proof	534 - 535, 544, 554 - 555
EMC	580
Central lever	609 - 611
LS-TYPE	622 - 623
IP68	640 - 643
panel supports: COB	page: 652 - 653

inserts, screw terminal connection



**Q SILVER PLATED CONTACTS**

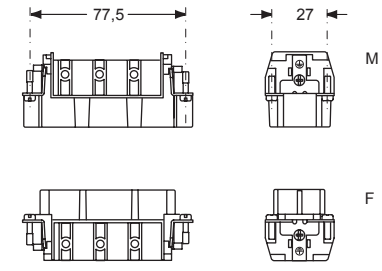
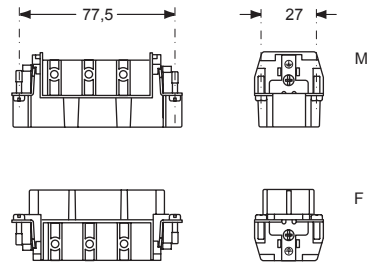
inserts, screw terminal connection



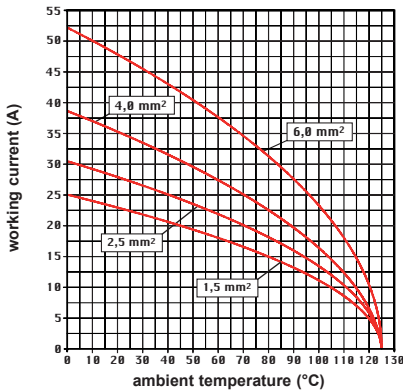
**Q SILVER PLATED CONTACTS**

description	part No.	part No.
indirect, with plate female inserts with female contacts male inserts with male contacts	<b>CPF 06</b> <b>CPM 06</b>	
indirect, with plate, use in temperatures up to 180 °C female inserts with female contacts, brown male inserts with male contacts, brown		<b>CPF 06 RY</b> <b>CPM 06 RY</b>

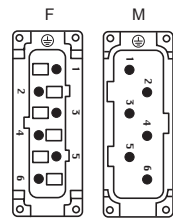
- characteristics according to EN 61984:
- 35A 400/690V 6kV 3**
- certified
- rated voltage according to UL/CSA: 600V
- insulation resistance: ≥ 10 GΩ
- ambient temperature limit: -40 °C ... +125 °C (CP RY version up to 180 °C)
- made of self-extinguishing thermoplastic resin UL 94V-0
- mechanical life: ≥ 500 cycles
- contact resistance: ≤ 0,5 mΩ
- for max. current load see the connector inserts derating diagrams below; for more information see page 28



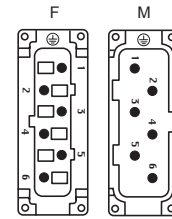
**CP 06 poles connector inserts**  
Maximum current load derating diagram



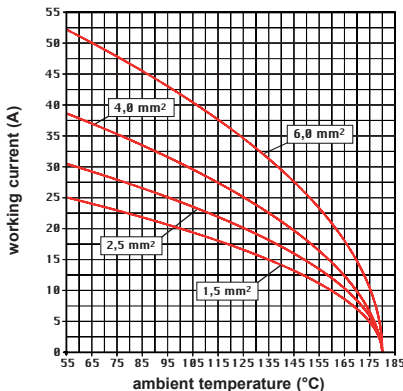
contacts side (front view)



contacts side (front view)



**CP...RY 06 poles connector inserts**  
Maximum current load derating diagram



- inserts with plate, for section conductors: 0,75 - 6 mm² - AWG 18 - 10
- conductors stripping length: 10,5 mm
- terminal screw torque: 1,2 Nm (10,7 lb.in), information see page 20 and 21

- inserts with plate, for section conductors: 0,75 - 6 mm² - AWG 18 - 10
- conductors stripping length: 10,5 mm
- terminal screw torque: 1,2 Nm (10,7 lb.in), information see page 20 and 21

CP - CP...RY