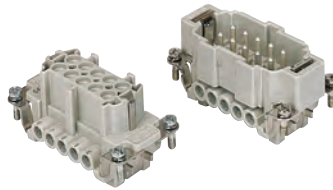


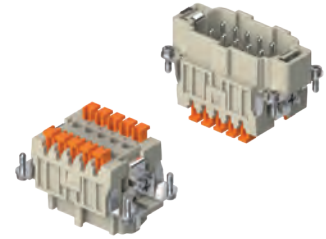
# CNE CSH-SQUICH® 10 poles + ⊕ 16A - 500V

enclosures: size "57.27"	page:
C-TYPE IP65/IP66	393 - 401
C7 IP67, two levers	438
V-TYPE IP65/IP66, single lever	448 - 453
BIG hoods	468 - 469
T-TYPE IP65 insulating	482 - 483
T-TYPE / W IP66/IP69 insulating	490
HYGIENIC T-TYPE / H IP66/IP69	502
HYGIENIC T-TYPE / C IP66/IP69, -50 °C	507
W-TYPE for aggressive environments	522
E-Xtreme® corrosion proof	532 - 533, 543, 552 - 553
EMC	579
Central lever	606 - 608
LS-TYPE	620 - 621
IP68	636 - 639
panel supports: COB	page: 652 - 653

## inserts, screw terminal connections

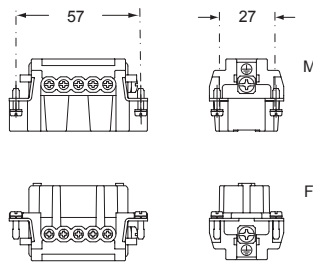


## inserts, spring terminal connections without tools

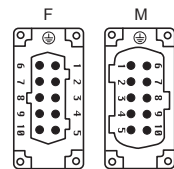


description	part No.	part No.
indirect, with plate <sup>1)</sup> female inserts with female contacts male inserts with male contacts	<b>CNEF 10 T</b> <b>CNEM 10 T</b>	
direct, without plate <sup>2)</sup> female inserts with female contacts male inserts with male contacts	<b>CNEF 10 TX</b> <b>CNEM 10 TX</b>	
spring terminals with actuator button female inserts with female contacts male inserts with male contacts		<b>CSHF 10</b> <b>CSHM 10</b>

- characteristics according to EN 61984:  
**16A 500V 6kV 3**  
**16A 400/690V 6kV 2**
- (UL for USA and Canada), certified
- rated voltage according to UL/CSA: 600V
- insulation resistance: ≥ 10 GΩ
- ambient temperature limit: -40 °C ... +125 °C
- made of self-extinguishing thermoplastic resin UL 94V-0
- mechanical life: ≥ 500 cycles
- contact resistance: ≤ 1 mΩ (CNE) - ≤ 3 mΩ (CSH)
- for max. current load see the connector inserts derating diagrams below; for more information see page 28



contacts side (front view)

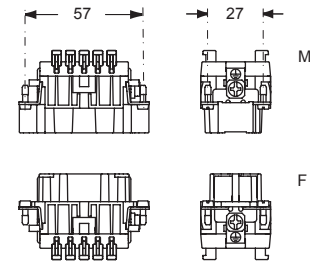


- inserts with plate for section conductors:  
0,5 - 4 mm<sup>2</sup> - AWG 20 - 12
- inserts without plate for section conductors:  
0,25 - 2,5 mm<sup>2</sup> - AWG 24 - 14
- conductors stripping length: 7 mm
- terminal screw torque: 0,5 Nm (4.4 lb.in), for more information see page 20 and 21

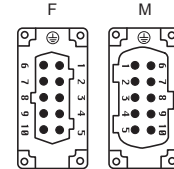
<sup>1)</sup> for unprepared conductors



<sup>2)</sup> for conductors with end sleeve ferrule

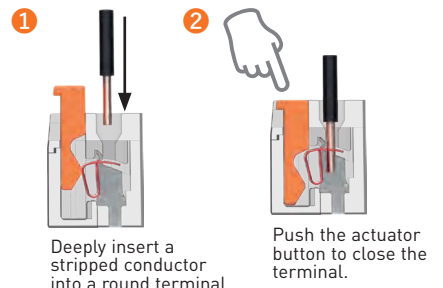


contacts side (front view)

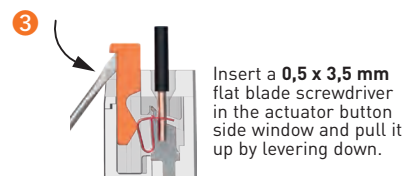


- inserts for connectors with the following sections:  
0,14 - 2,5 mm<sup>2</sup> - AWG 26 - 14
- conductors stripping length: 9...11 mm

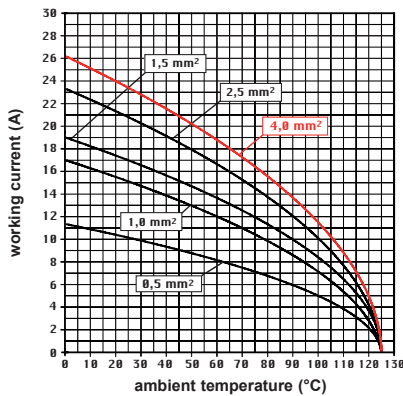
### SQUICH®-spring connection technology WIRING



### RE-OPENING



**CNE 10 poles connector inserts**  
Maximum current load derating diagram



**CSH 10 poles connector inserts**  
Maximum current load derating diagram

