

CNE CSH-SQUICH® 48 poles + ⊕ 16A - 500V

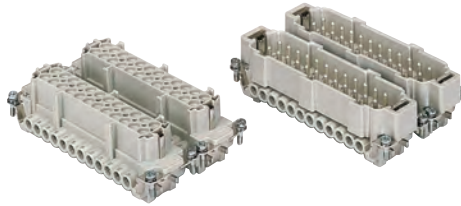
enclosures:
size "104.62"

page:

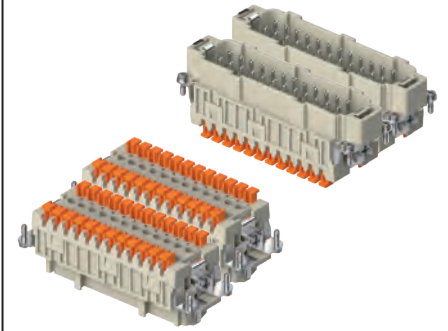
C-TYPE IP65/IP66
W-TYPE for aggressive environments
E-Xtreme® corrosion proof

430
526
547

inserts,
screw terminal connections

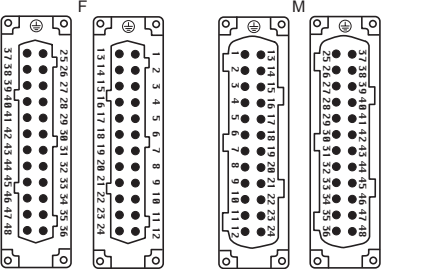
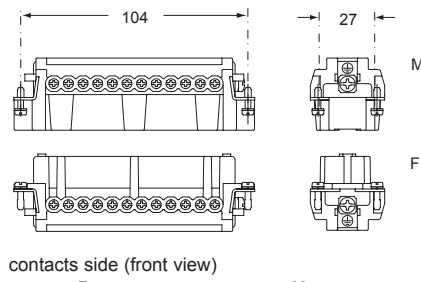


inserts,
spring terminal connections without tools

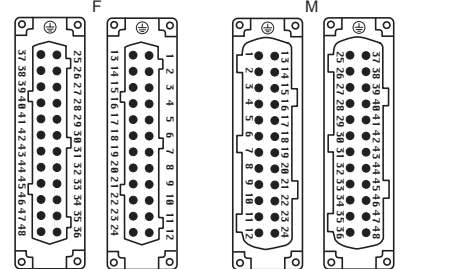
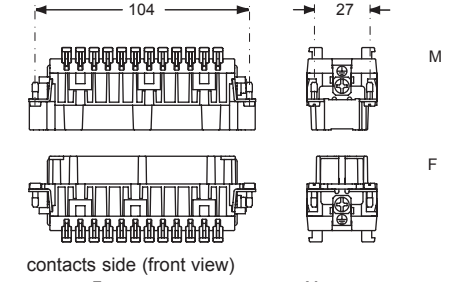


description	part No.	part No.	part No.	part No.
indirect, with plate ¹⁾ female inserts, No. (1-24) and (25-48) male inserts, No. (1-24) and (25-48)	CNEF 24 T CNEM 24 T	CNEF 24 TN CNEM 24 TN		
direct, without plate ²⁾ female inserts, No. (1-24) and (25-48) male inserts, No. (1-24) and (25-48)	CNEF 24 TX CNEM 24 TX	CNEF 24 TXN CNEM 24 TXN		
spring terminals with actuator button female inserts with female contacts, No. (1-24) and (25-48) male inserts with male contacts, No. (1-24) and (25-48)			CSHF 24 CSHM 24	CSHF 24 N CSHM 24 N

- characteristics according to EN 61984:
16A 500V 6kV 3
16A 400/690V 6kV 2
- cULus (UL for USA and Canada),
- certified
- rated voltage according to UL/GSA: 600V
- insulation resistance: ≥ 10 GΩ
- ambient temperature limit: -40 °C ... +125 °C
- made of self-extinguishing thermoplastic resin UL 94V-0
- mechanical life: ≥ 500 cycles
- contact resistance: ≤ 1 mΩ (CNE) - ≤ 3 mΩ (CSH)
- for max. current load see the connector inserts derating diagrams below; for more information see page 28

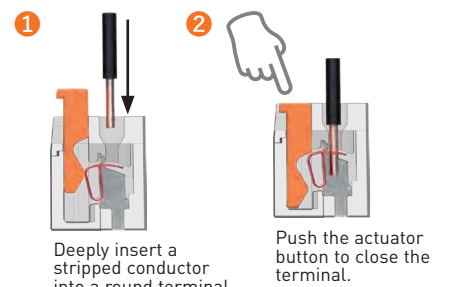


- inserts with plate for section conductors:
0,5 - 4 mm² - AWG 20 - 12
- inserts without plate for section conductors:
0,25 - 2,5 mm² - AWG 24 - 14
- conductors stripping length: 7 mm
- terminal screw torque: 0,5 Nm (4,4 lb.in), for more information see page 20 and 21

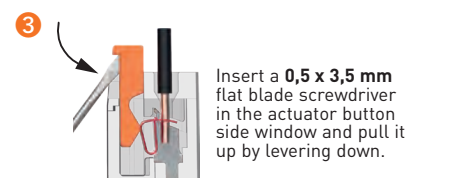


- inserts for connectors with the following sections:
0,14 - 2,5 mm² - AWG 26 - 14
- conductors stripping length: 9...11 mm

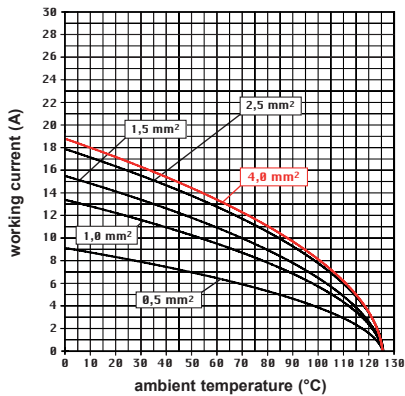
SQUICH®-spring connection technology
WIRING



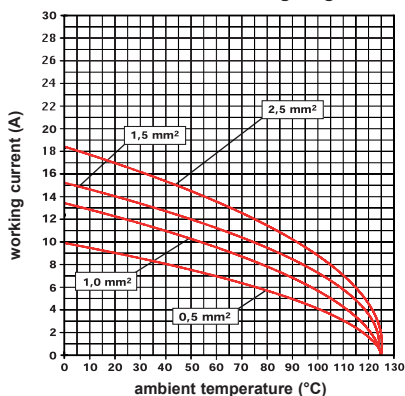
RE-OPENING



CNE 48 poles connector inserts
Maximum current load derating diagram



CSH 48 poles connector inserts
Maximum current load derating diagram



¹⁾ for unprepared conductors



²⁾ for conductors with end sleeve ferrule

