

CNE CSH-SQUICH® 32 poles + ⊕ 16A - 500V

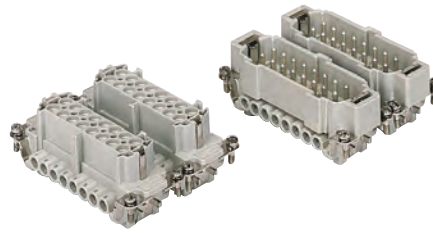
enclosures:
size "77.62"

page:

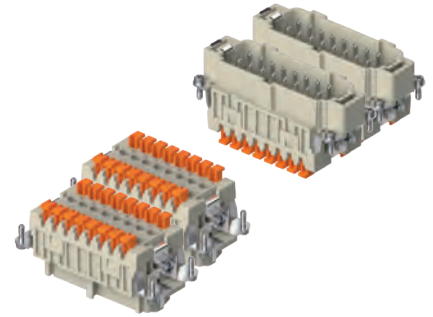
C-TYPE IP65/IP66
W-TYPE for aggressive environments
E-Xtreme® corrosion proof

424 - 429
525
546

inserts,
screw terminal connections

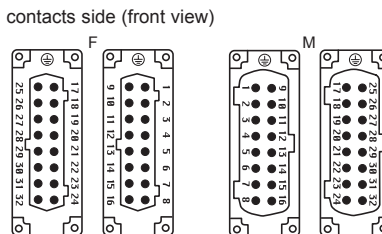
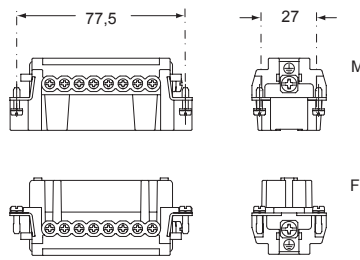


inserts,
spring terminal connections without tools

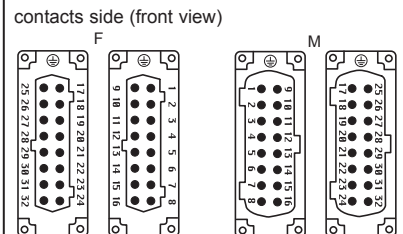
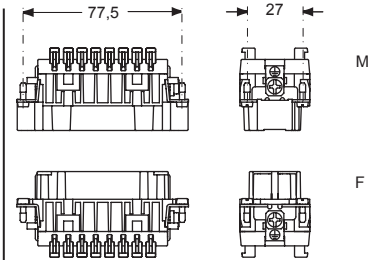


description	part No.	part No.	part No.	part No.
indirect, with plate ¹⁾ female inserts, No. (1-16) and (17-32) male inserts, No. (1-16) and (17-32)	CNEF 16 T CNEM 16 T	CNEF 16 TN CNEM 16 TN		
direct, without plate ²⁾ female inserts, No. (1-16) and (17-32) male inserts, No. (1-16) and (17-32)	CNEF 16 TX CNEM 16 TX	CNEF 16 TXN CNEM 16 TXN		
spring terminals with actuator button female inserts with female contacts, No. (1-16) and (17-32) male inserts with male contacts, No. (1-16) and (17-32)			CSHF 16 CSHM 16	CSHF 16 N CSHM 16 N

- characteristics according to EN 61984:
16A 500V 6kV 3
16A 400/690V 6kV 2
- (UL for USA and Canada),
- certified
- rated voltage according to UL/CSA: 600V
- insulation resistance: $\geq 10 \text{ G}\Omega$
- ambient temperature limit: $-40 \text{ }^\circ\text{C} \dots +125 \text{ }^\circ\text{C}$
- made of self-extinguishing thermoplastic resin UL 94V-0
- mechanical life: ≥ 500 cycles
- contact resistance: $\leq 1 \text{ m}\Omega$ (CNE) - $\leq 3 \text{ m}\Omega$ (CSH)
- for max. current load see the connector inserts derating diagrams below; for more information see page 28

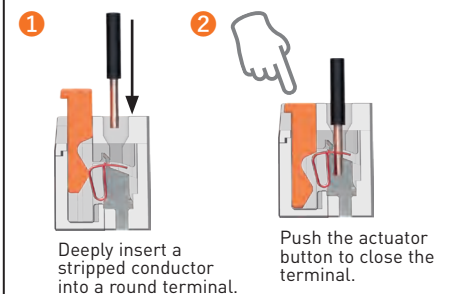


- inserts with plate for section conductors:
0,5 - 4 mm² - AWG 20 - 12
- inserts without plate for section conductors:
0,25 - 2,5 mm² - AWG 24 - 14
- conductors stripping length: 7 mm
- terminal screw torque: 0,5 Nm (4.4 lb.in), for more information see page 20 and 21

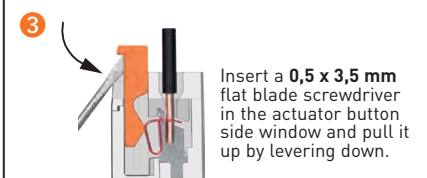


- inserts for connectors with the following sections:
0,14 - 2,5 mm² - AWG 26 - 14
- conductors stripping length: 9...11 mm

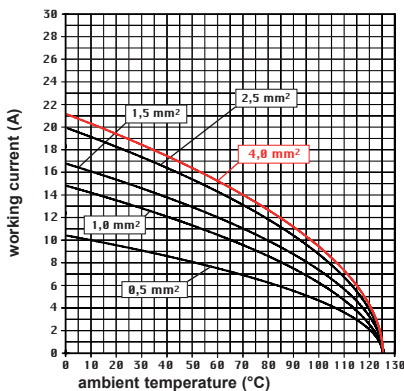
SQUICH®-spring connection technology
WIRING



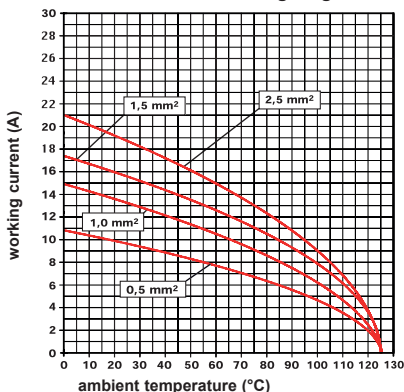
RE-OPENING



CNE 32 poles connector inserts
Maximum current load derating diagram



CSH 32 poles connector inserts
Maximum current load derating diagram



¹⁾ for unprepared conductors



²⁾ for conductors with end sleeve ferrule

