

CKSH-SQUICH® 3 and 4 poles + 10A - 400V SQUICH®

enclosures: size "21.21"	page:
Insulating type	339 - 348
Metallic type	349 - 363
W-TYPE for aggressive environments	512 - 518
E-Xtreme® corrosion proof	538 - 539
EMC	564 - 572
IP68	628 - 631

- can be mated with CK inserts

inserts, 3 poles + spring terminal connection without tools

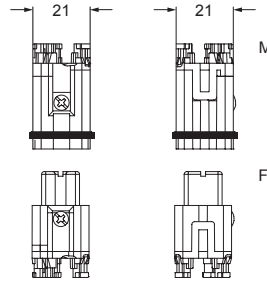


inserts, 4 poles + spring terminal connection without tools

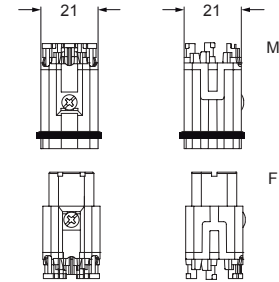
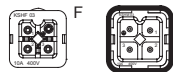


description	part No.	part No.
female inserts with female contacts	CKSHF 03	CKSHF 04
male inserts with male contacts	CKSHM 03	CKSHM 04
female inserts with female contacts		
male inserts with male contacts		

- characteristics according to EN 61984:
10A 400V 4kV 3
10A 690V 4kV 2
- certified
- rated voltage according to UL/CSA: 600V
- insulation resistance: $\geq 10 \text{ G}\Omega$
- ambient temperature limits: $-40 \text{ }^\circ\text{C} \dots +125 \text{ }^\circ\text{C}$
- made of self-extinguishing thermoplastic resin UL 94V-0
- mechanical life: ≥ 500 cycles
- contact resistance: $\leq 3 \text{ m}\Omega$
- for max. current load see the connector inserts derating diagrams below; for more information see page 28



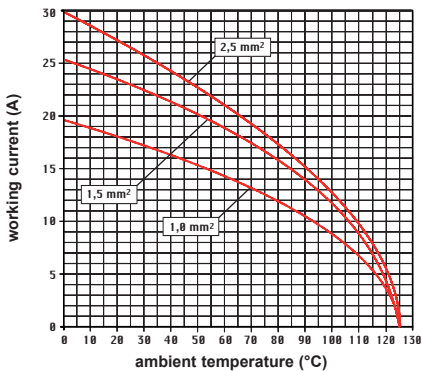
contacts side (front view)



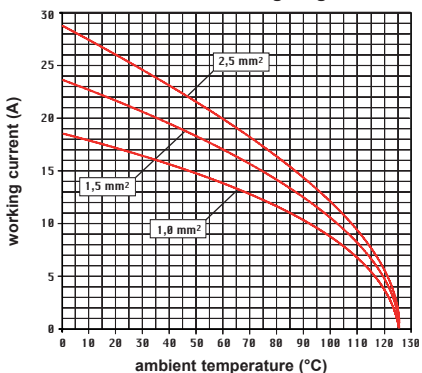
contacts side (front view)



CKSH 03 poles connector inserts
Maximum current load derating diagram



CKSH 04 poles connector inserts
Maximum current load derating diagram



- inserts for wires with the following cross-sectional areas: 0,14 - 2,5 mm² - AWG 26 - 14 for prepared wires useable section: up to 1,5 mm² (AWG 16)
- conductor stripping length: 9...11 mm

CR K03
coding pins
(page 688)

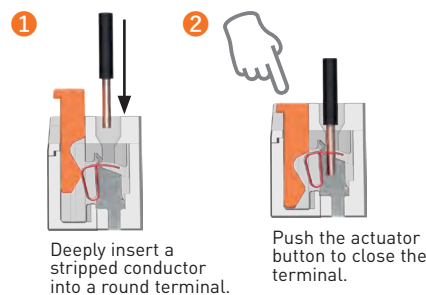


- inserts for wires with the following cross-sectional areas: 0,14 - 2,5 mm² - AWG 26 - 14 for prepared wires useable section: up to 1,5 mm² (AWG 16)
- conductor stripping length: 9...11 mm

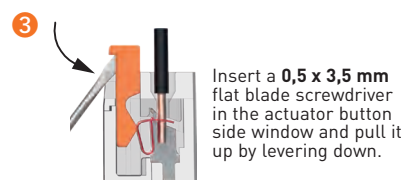
CR K04R
and **CR K04G** coding pins
(page 688)



SQUICH®-spring connection technology WIRING



RE-OPENING



Rear top entry of wires for a more easier wiring

